

CENPF antibody [14C10 1D8]

Cat. No. GTX70137

Host	Mouse
Clonality	Monoclonal
Isotype	IgG2a
Applications	WB, ICC/IF, IHC-P, IHC-Fr, FCM, IP
Reactivity	Human

References (9)

Package

100 µl

Applications

Application Note

*Optimal dilutions/concentrations should be determined by the researcher.

Suggested dilution	Recommended dilution
WB	1:500
ICC/IF	Assay dependent
IHC-P	Assay dependent
IHC-Fr	Assay dependent
FCM	Assay dependent
IP	Assay dependent

Not tested in other applications.

Calculated MW 358 kDa. ([Note](#))

Properties

Form	Liquid
Buffer	PBS
Preservative	No preservatives
Storage	Store as concentrated solution. Centrifuge briefly prior to opening vial. For short-term storage (1-2 weeks), store at 4°C. For long-term storage, aliquot and store at -20°C or below. Avoid multiple freeze-thaw cycles.
Concentration	1 mg/ml (Please refer to the vial label for the specific concentration.)
Immunogen	Protein fragment expressed in E. coli corresponding to amino acids 1759-2093.
Purification	Protein G purified
Conjugation	Unconjugated



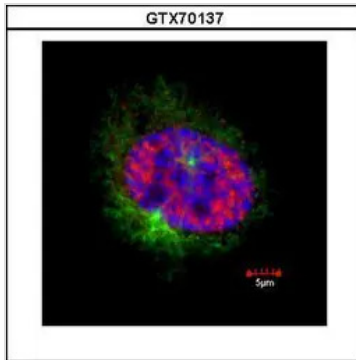
For full product information, images and publications, please visit our [website](#).

For laboratory research use only. Not for any clinical, therapeutic, or diagnostic use in humans or animals. Not for animal or human consumption.

Note

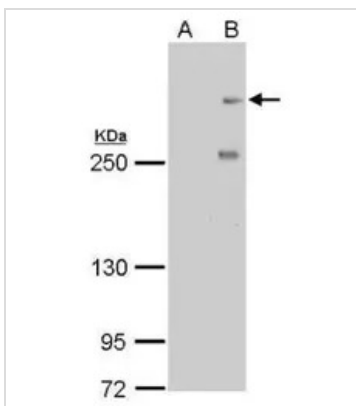
Purchasers shall not, and agree not to enable third parties to, analyze, copy, reverse engineer or otherwise attempt to determine the structure or sequence of the product.

DATA IMAGES



GTX70137 ICC/IF Image

Confocal immunofluorescence staining (Olympus FV10i) of Mitosin. U2OS cells were fixed by 4% PFA and costained with Mitosin 14C10 1D8 AB (Red; cat# GTX70137; 1:500 Ab dilution) and alpha-tubulin rabbit polyclonal AB (Green; cat# GTX112141; 1:500 Ab dilution), a spindle marker. DAPI (blue), chromosomes. Scale bar, 5 μ m



GTX70137 WB Image

CENPF antibody [14C10 1D8] detects CENPF protein by western blot analysis.

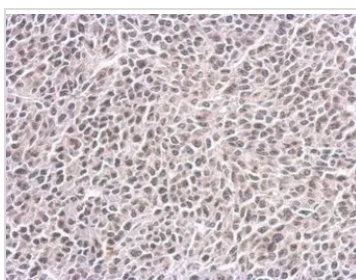
A. 30 μ g HeLa whole cell lysate/extract (untreated)

B. 30 μ g HeLa whole cell lysate/extract (100ng/ml Nocodazole treatment for 24hr)

5% SDS-PAGE

CENPF antibody [14C10 1D8] (GTX70137) dilution: 1:500

The HRP-conjugated anti-mouse IgG antibody (GTX213111-01) was used to detect the primary antibody.



GTX70137 IHC-P Image

CENPF antibody [14C10 1D8] detects CENPF protein at nucleus on BT483 xenograft by immunohistochemical analysis.

Sample: Paraffin-embedded BT483 xenograft.

CENPF antibody [14C10 1D8] (GTX70137) dilution: 1:200.

Antigen Retrieval: Trilogy™ (EDTA based, pH 8.0) buffer, 15min



For full product information, images and publications, please visit our [website](#).