

DNA ligase I antibody

Cat. No. GTX70139

Host	Mouse
Clonality	Polyclonal
Isotype	IgG
Applications	WB
Reactivity	Human

Package

50 µl

Applications

Application Note

Optima dilutions/concentrations should be determined by the researcher.

Calculated MW 102 kDa. ([Note](#))

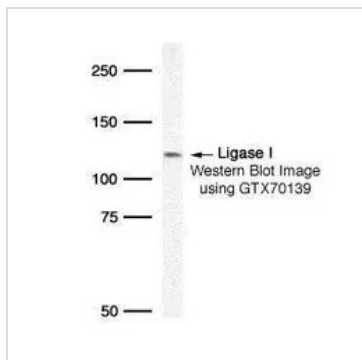
Properties

Form	Liquid
Buffer	Serum
Storage	Store as concentrated solution. Centrifuge briefly prior to opening vial. For short-term storage (1-2 weeks), store at 4°C. For long-term storage, aliquot and store at -20°C or below. Avoid multiple freeze-thaw cycles.
Immunogen	Full-length recombinant human DNA Ligase I protein
Purification	Unpurified From polyclonal serum
Conjugation	Unconjugated
Note	For laboratory research use only. Not for any clinical, therapeutic, or diagnostic use in humans or animals. Not for animal or human consumption. Purchasers shall not, and agree not to enable third parties to, analyze, copy, reverse engineer or otherwise attempt to determine the structure or sequence of the product.



For full product information, images and publications, please visit our [website](#).

DATA IMAGES



GTX70139 WB Image

Detection of human DNA Ligase I protein in Raji whole cell lysate using GeneTex polyclonal antiserum GTX70139.



For full product information, images and publications, please visit our [website](#).