

## DNA ligase I antibody [10H5]

Cat. No. GTX70141

Host	Mouse
Clonality	Monoclonal
Isotype	IgG1
Application	WB, ICC/IF, IHC-P, IP
Reactivity	Human, Mouse

Reference ( 13 )

Package

100 µl

## APPLICATION

## Application Note

\*Optimal dilutions/concentrations should be determined by the researcher.

Suggested dilution	Recommended dilution
WB	Assay dependent
ICC/IF	Assay dependent
IHC-P	Assay dependent
IP	Assay dependent

Not tested in other applications.

Calculated MW 102 kDa. ( [Note](#) )

## PROPERTIES

Form	Liquid
Buffer	PBS
Preservative	No preservative
Storage	Store as concentrated solution. Centrifuge briefly prior to opening vial. For short-term storage (1-2 weeks), store at 4°C. For long-term storage, aliquot and store at -20°C or below. Avoid multiple freeze-thaw cycles.
Concentration	0.5 mg/ml (Please refer to the vial label for the specific concentration.)
Immunogen	Full-length recombinant human DNA Ligase I protein
Purification	Protein G purified
Conjugation	Unconjugated

## Note

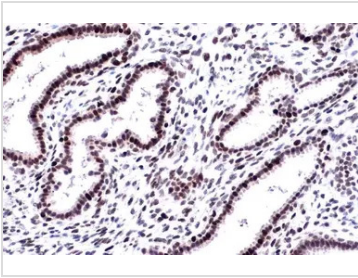
For laboratory research use only. Not for any clinical, therapeutic, or diagnostic use in humans or animals. Not for animal or human consumption.

Purchasers shall not, and agree not to enable third parties to, analyze, copy, reverse engineer or otherwise attempt to determine the structure or sequence of the product.



For full product information, images and publications, please visit our [website](#).

## DATA IMAGES



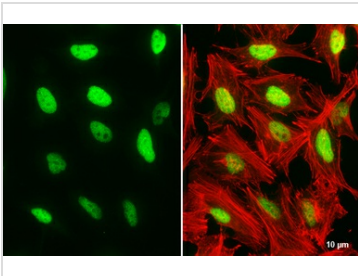
### GTX70141 IHC-P Image

DNA ligase I antibody [10H5] detects DNA ligase I protein at nucleus by immunohistochemical analysis.

Sample: Paraffin-embedded human breast carcinoma.

DNA ligase I stained by DNA ligase I antibody [10H5] (GTX70141) diluted at 1:100.

Antigen Retrieval: Citrate buffer, pH 6.0, 15 min



### GTX70141 ICC/IF Image

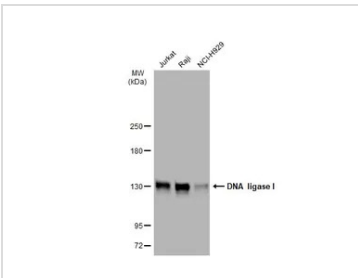
DNA ligase I antibody [10H5] detects DNA ligase I protein at nucleus by immunofluorescent analysis.

Sample: HeLa cells were fixed in 4% paraformaldehyde at RT for 15 min.

Green: DNA ligase I stained by DNA ligase I antibody [10H5] (GTX70141) diluted at 1:500.

Red: phalloidin, a cytoskeleton marker, diluted at 1:200.

Scale bar= 10 μm.



### GTX70141 WB Image

Various whole cell extracts (30 μg) were separated by 5% SDS-PAGE, and the membrane was blotted with DNA ligase I antibody [10H5] (GTX70141) diluted at 1:2000. The HRP-conjugated anti-mouse IgG antibody (GTX213111-01) was used to detect the primary antibody.



For full product information, images and publications, please visit our [website](https://www.genetex.com).