

DNA ligase III antibody [1F3]

Cat. No. GTX70143

Host	Mouse
Clonality	Monoclonal
Isotype	IgG1
Applications	WB, ICC/IF, IP, Blocking, PLA
Reactivity	Human, Mouse, Chicken

References (29)

Package

100 µl

Applications

Application Note

*Optimal dilutions/concentrations should be determined by the researcher.

Suggested dilution	Recommended dilution
WB	1:500-1:3000
ICC/IF	Assay dependent
IP	Assay dependent
Blocking	Assay dependent
PLA	Assay dependent

Not tested in other applications.

Calculated MW 113 kDa. ([Note](#))

Properties

Form	Liquid
Buffer	PBS
Preservative	No preservatives
Storage	Store as concentrated solution. Centrifuge briefly prior to opening vial. For short-term storage (1-2 weeks), store at 4°C. For long-term storage, aliquot and store at -20°C or below. Avoid multiple freeze-thaw cycles.
Concentration	1 mg/ml (Please refer to the vial label for the specific concentration.)
Immunogen	Recombinant full-length human DNA Ligase III-b.
Purification	Protein G affinity purified. From hybridoma culture supernatant.
Conjugation	Unconjugated



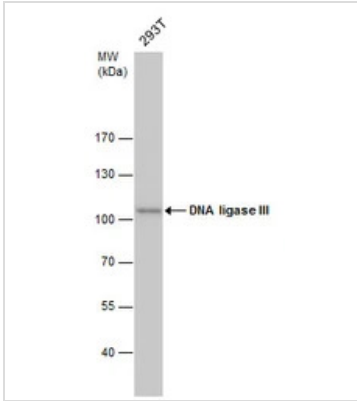
For full product information, images and publications, please visit our [website](#).

For laboratory research use only. Not for any clinical, therapeutic, or diagnostic use in humans or animals. Not for animal or human consumption.

Note

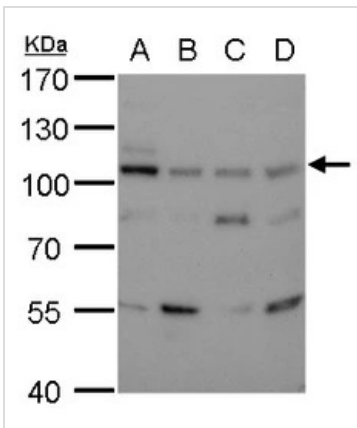
Purchasers shall not, and agree not to enable third parties to, analyze, copy, reverse engineer or otherwise attempt to determine the structure or sequence of the product.

DATA IMAGES



GTx70143 WB Image

DNA ligase III antibody detects DNA ligase III protein by western blot analysis. Whole cell extracts (30 µg) was separated by 7.5% SDS-PAGE, and the membrane was blotted with DNA ligase III antibody (GTx70143) diluted by 1:500. The HRP-conjugated anti-mouse IgG antibody (GTx213111-01) was used to detect the primary antibody.



GTx70143 WB Image

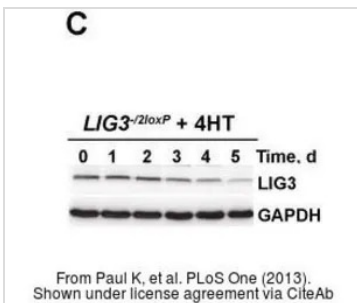
DNA ligase III detects DNA ligase III antibody [1F3] protein by western blot analysis.

- A. 30 µg 293T whole cell lysate/extract
 - B. 30 µg A431 whole cell lysate/extract
 - C. 30 µg HeLa whole cell lysate/extract
 - D. 30 µg HepG2 whole cell lysate/extract
- 7.5% SDS-PAGE

DNA ligase III (GTx70143) dilution: 1:500

The HRP-conjugated anti-mouse IgG antibody (GTx213111-01) was used to detect the primary antibody.

The indicated band with observed MW (103 kDa) may represent the larger isoform of human DNA Ligase III as reported by [Chen J et al](#) and [Nash RA et al](#).



GTx70143 WB Image

The data was published in the journal PLoS One in 2013. [PMID: 23555685](#)



For full product information, images and publications, please visit our [website](#).