

E2F1 antibody [17E2]

Cat. No. GTX70154

Host	Mouse
Clonality	Monoclonal
Isotype	IgG1
Applications	WB, IHC-P, IP
Reactivity	Human, Mouse

Package
100 µl

Applications

Application Note

*Optimal dilutions/concentrations should be determined by the researcher.

Suggested dilution	Recommended dilution
WB	1 - 5 µg/ml
IHC-P	Assay dependent
IP	Assay dependent

Not tested in other applications.

Calculated MW 47 kDa. ([Note](#))

Product Note This antibody recognizes E2F-1 that was identified as a cellular protein with DNA binding activity associated with the adenovirus E2 gene promoter.

Properties

Form	Liquid
Buffer	PBS, 20% Glycerol
Preservative	No preservatives
Storage	Store as concentrated solution. Centrifuge briefly prior to opening vial. For short-term storage (1-2 weeks), store at 4°C. For long-term storage, aliquot and store at -20°C or below. Avoid multiple freeze-thaw cycles.
Concentration	1 mg/ml (Please refer to the vial label for the specific concentration.)
Immunogen	The transactivation and retinoblastoma protein binding domain (amino acids 332-390) of E2F-1 expressed in E. coli.
Purification	Protein G affinity purified. From hybridoma culture supernatant.
Conjugation	Unconjugated



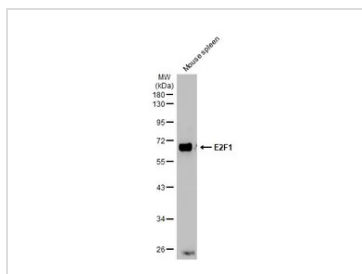
For full product information, images and publications, please visit our [website](#).

For laboratory research use only. Not for any clinical, therapeutic, or diagnostic use in humans or animals. Not for animal or human consumption.

Note

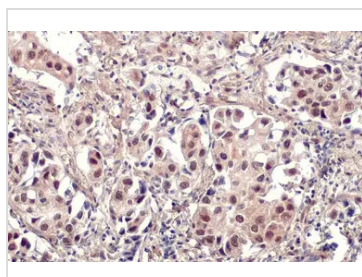
Purchasers shall not, and agree not to enable third parties to, analyze, copy, reverse engineer or otherwise attempt to determine the structure or sequence of the product.

DATA IMAGES



GTx70154 WB Image

Mouse tissue extract (50 µg) was separated by 10% SDS-PAGE, and the membrane was blotted with E2F1 antibody [17E2] (GTx70154) diluted at 1:1000. The HRP-conjugated anti-mouse IgG antibody (GTx213111-01) was used to detect the primary antibody.



GTx70154 IHC-P Image

E2F1 antibody [17E2] detects E2F1 protein at nucleus by immunohistochemical analysis.

Sample: Paraffin-embedded human lung cancer.

E2F1 stained by E2F1 antibody [17E2] (GTx70154) diluted at 1:100.

Antigen Retrieval: Citrate buffer, pH 6.0, 15 min



For full product information, images and publications, please visit our [website](https://www.genetex.com).