

## Estrogen Receptor alpha antibody [1F3]

Cat. No. GTX70171

Host	Mouse
Clonality	Monoclonal
Isotype	IgG1
Applications	WB, IHC-Fr, FCM, IP
Reactivity	Human, Rabbit

References ( 7 )

Package

100 µl

## Applications

## Application Note

\*Optimal dilutions/concentrations should be determined by the researcher.

Suggested dilution	Recommended dilution
WB	1:500-1:3000
IHC-Fr	Assay dependent
FCM	Assay dependent
IP	1 - 5 µg/ml

Not tested in other applications.

**Calculated MW** 66 kDa. ( [Note](#) )

**Product Note** This antibody is specific for ER alpha protein, and it does not cross react with ER beta protein.

## Properties

Form	Liquid
Buffer	PBS
Preservative	No preservatives
Storage	Store as concentrated solution. Centrifuge briefly prior to opening vial. For short-term storage (1-2 weeks), store at 4°C. For long-term storage, aliquot and store at -20°C or below. Avoid multiple freeze-thaw cycles.
Concentration	1.56 mg/ml (Please refer to the vial label for the specific concentration.)
Immunogen	The region encoding amino acids 1-190 expressed in E. coli.
Purification	Protein G purified From tissue culture supernatant
Conjugation	Unconjugated



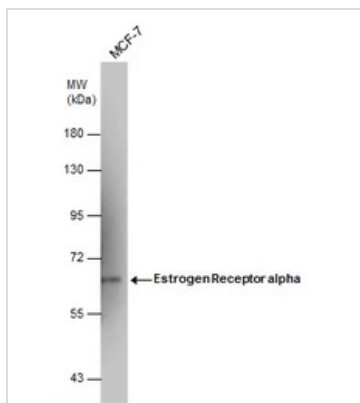
For full product information, images and publications, please visit our [website](#).

For laboratory research use only. Not for any clinical, therapeutic, or diagnostic use in humans or animals. Not for animal or human consumption.

## Note

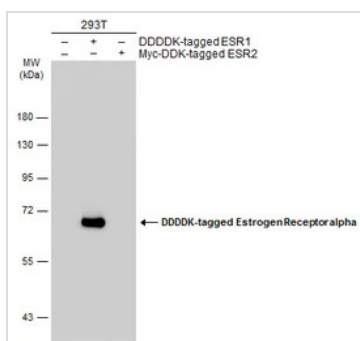
Purchasers shall not, and agree not to enable third parties to, analyze, copy, reverse engineer or otherwise attempt to determine the structure or sequence of the product.

## DATA IMAGES



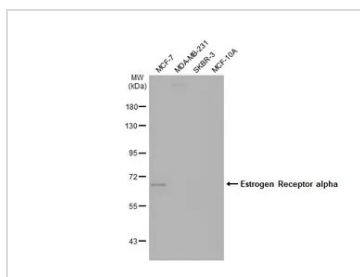
### GTX70171 WB Image

Whole cell extract (60 µg) was separated by 7.5% SDS-PAGE, and the membrane was blotted with Estrogen Receptor alpha antibody (GTX70171) diluted at 1:500. The HRP-conjugated anti-mouse IgG antibody (GTX213111-01) was used to detect the primary antibody, and the signal was developed with Trident femto Western HRP Substrate (GTX14698).



### GTX70171 WB Image

Non-transfected (–) and transfected (+) 293T whole cell extracts (30 µg) were separated by 7.5% SDS-PAGE, and the membrane was blotted with Estrogen Receptor alpha antibody [1F3] (GTX70171) diluted at 1:5000. The HRP-conjugated anti-mouse IgG antibody (GTX213111-01) was used to detect the primary antibody.



### GTX70171 WB Image

Various whole cell extracts (30 µg) were separated by 7.5% SDS-PAGE, and the membrane was blotted with Estrogen Receptor alpha antibody [1F3] (GTX70171) diluted at 1:1000. The HRP-conjugated anti-mouse IgG antibody (GTX213111-01) was used to detect the primary antibody. The observed expression level is based on the publication: PMID: 24724101



For full product information, images and publications, please visit our [website](https://www.genetex.com).