

Estrogen Receptor beta antibody [14C8]

Cat. No. GTX70174

Host	Mouse
Clonality	Monoclonal
Isotype	IgG2b
Applications	WB, ICC/IF, IHC-P, IHC-Fr, FCM, Dot, ChIP assay, IHC-P (cell pellet)
Reactivity	Human, Mouse, Monkey

References (127)

★★★★★ Review (2)

Package

100 µl

Applications

Application Note

For IHC, a recommended protocol is provided. For WB: Use at a concentration of 1-5 µg/ml. For ChIP: Use at an dependent assay. Optimal dilutions/concentrations should be determined by the researcher.

Calculated MW 59 kDa. ([Note](#))

Product Note

Strong Erb staining in epithelial cell nuclei. Occasional weak to moderate staining is seen in surrounding stromal and endothelial cell nuclei. Sporadic light cytoplasmic staining is sometimes observed. We have also successfully detected ERb in colon and ovarian tumors using the same antibody. KO/KD validation is based on published data (PMID: 27323858).

Properties

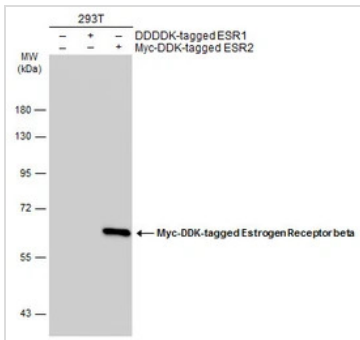
Form	Liquid
Buffer	PBS
Preservative	No preservatives
Storage	Store as concentrated solution. Centrifuge briefly prior to opening vial. For short-term storage (1-2 weeks), store at 4°C. For long-term storage, aliquot and store at -20°C or below. Avoid multiple freeze-thaw cycles.
Concentration	1.23 mg/ml (Please refer to the vial label for the specific concentration.)
Immunogen	Amino acids 1-153 of human ER-beta expressed in E. coli.
Purification	Protein G purified
Conjugation	Unconjugated
Note	<p>For laboratory research use only. Not for any clinical, therapeutic, or diagnostic use in humans or animals. Not for animal or human consumption.</p> <p>Purchasers shall not, and agree not to enable third parties to, analyze, copy, reverse engineer or otherwise attempt to determine the structure or sequence of the product.</p>



For full product information, images and publications, please visit our [website](#).

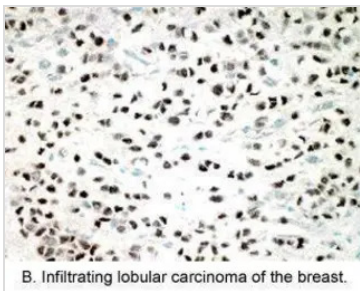
Date 2025 / 09 / 06 Page 1 of 2

DATA IMAGES



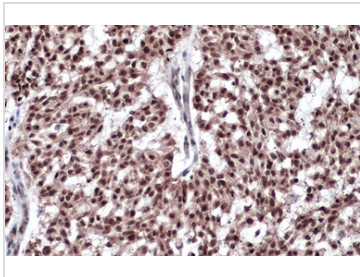
GTx70174 WB Image

Non-transfected (–) and transfected (+) 293T whole cell extracts (30 µg) were separated by 7.5% SDS-PAGE, and the membrane was blotted with Estrogen Receptor beta antibody [14C8] (GTx70174) diluted at 1:5000. The HRP-conjugated anti-mouse IgG antibody (GTx213111-01) was used to detect the primary antibody.



GTx70174 Image

B. Infiltrating lobular carcinoma of the breast.



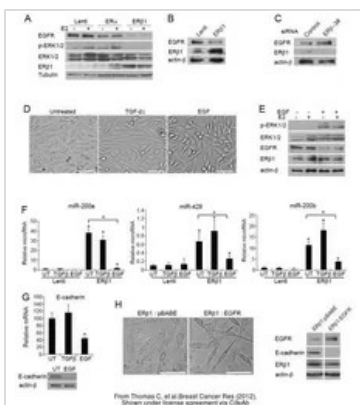
GTx70174 IHC-P Image

Estrogen Receptor beta antibody [14C8] detects Estrogen Receptor beta protein at nucleus by immunohistochemical analysis.

Sample: Paraffin-embedded human breast carcinoma.

Estrogen Receptor beta stained by Estrogen Receptor beta antibody [14C8] (GTx70174) diluted at 1:200.

Antigen Retrieval: Citrate buffer, pH 6.0, 15 min



GTx70174 WB Image

The data was published in the journal Breast Cancer Res in 2012. [PMID: 23158001](https://pubmed.ncbi.nlm.nih.gov/23158001/)



For full product information, images and publications, please visit our [website](https://www.genetex.com).