

FOXO1 antibody [7H3]

Cat. No. GTX70193

Host	Mouse
Clonality	Monoclonal
Isotype	IgG1
Applications	WB, ICC/IF, IHC-P
Reactivity	Human

Package
100 µl

Applications

Application Note

*Optimal dilutions/concentrations should be determined by the researcher.

Suggested dilution	Recommended dilution
WB	0.1 - 2 µg/ml
ICC/IF	Assay dependent
IHC-P	Assay dependent

Not tested in other applications.

Calculated MW 70 kDa. ([Note](#))

Properties

Form	Liquid
Buffer	PBS
Preservative	No preservatives
Storage	Store as concentrated solution. Centrifuge briefly prior to opening vial. For short-term storage (1-2 weeks), store at 4°C. For long-term storage, aliquot and store at -20°C or below. Avoid multiple freeze-thaw cycles.
Concentration	1 mg/ml (Please refer to the vial label for the specific concentration.)
Immunogen	Amino acids 242-655 of FKHR expressed in E. coli.
Purification	Protein G purified From tissue culture supernatant
Conjugation	Unconjugated

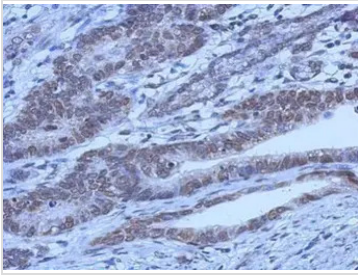
Note

For laboratory research use only. Not for any clinical, therapeutic, or diagnostic use in humans or animals. Not for animal or human consumption.

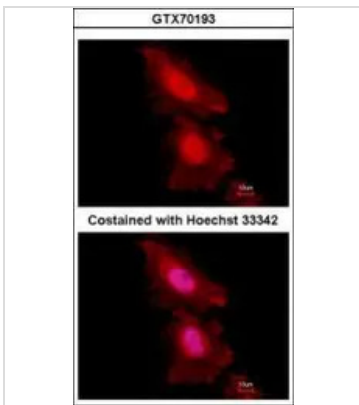
Purchasers shall not, and agree not to enable third parties to, analyze, copy, reverse engineer or otherwise attempt to determine the structure or sequence of the product.



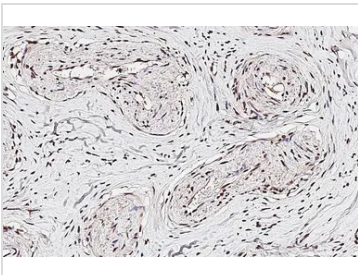
For full product information, images and publications, please visit our [website](#).

DATA IMAGES

GTX70193 IHC-P Image

Immunohistochemical analysis of paraffin-embedded Colon ca, using FOXO1(GTX70193) antibody at 1:50 dilution.


GTX70193 ICC/IF Image

Immunofluorescence analysis of paraformaldehyde-fixed HeLa, using FOXO1(GTX70193) antibody at 1:100 dilution.


GTX70193 IHC-P Image

FOXO1 antibody [7H3] detects FOXO1 protein by immunohistochemical analysis.

Sample: Paraffin-embedded human cervix.

FOXO1 stained by FOXO1 antibody [7H3] (GTX70193) diluted at 1:100.

Antigen Retrieval: Citrate buffer, pH 6.0, 15 min



For full product information, images and publications, please visit our [website](#).