

# SAFB antibody [6F7]

**Cat. No. GTX70197**

<b>Host</b>	Mouse
<b>Clonality</b>	Monoclonal
<b>Isotype</b>	IgG1
<b>Applications</b>	WB, ICC/IF, IP, IHC
<b>Reactivity</b>	Human, Mouse

**Package**  
100 µl

## Applications

### Application Note

\*Optimal dilutions/concentrations should be determined by the researcher.

Suggested dilution	Recommended dilution
WB	1 - 2 µg/ml
ICC/IF	Assay dependent
IP	Assay dependent
IHC	Assay dependent

Not tested in other applications.

**Calculated MW** 103 kDa. ([Note](#))

## Properties

<b>Form</b>	Liquid
<b>Buffer</b>	PBS
<b>Preservative</b>	No preservative
<b>Storage</b>	Store as concentrated solution. Centrifuge briefly prior to opening vial. For short-term storage (1-2 weeks), store at 4°C. For long-term storage, aliquot and store at -20°C or below. Avoid multiple freeze-thaw cycles.
<b>Concentration</b>	1 mg/ml (Please refer to the vial label for the specific concentration.)
<b>Immunogen</b>	A synthetic peptide corresponding to amino acids 345-357 (PEARDSKEDGRKF) of the human SAFB protein.
<b>Purification</b>	Protein G purified From tissue culture supernatant
<b>Conjugation</b>	Unconjugated



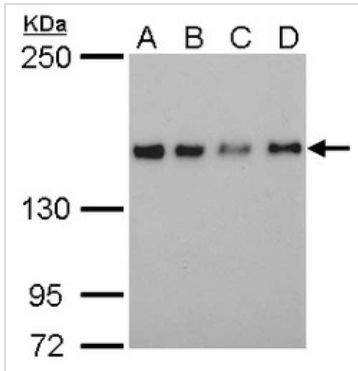
For full product information, images and publications, please visit our [website](#).

For laboratory research use only. Not for any clinical, therapeutic, or diagnostic use in humans or animals. Not for animal or human consumption.

**Note**

Purchasers shall not, and agree not to enable third parties to, analyze, copy, reverse engineer or otherwise attempt to determine the structure or sequence of the product.

DATA IMAGES



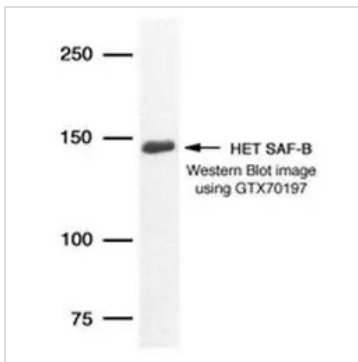
**GTX70197 WB Image**

HET/SAF-B antibody [6F7] detects HET/SAF-B protein by western blot analysis.

- A. 30 µg 293T whole cell lysate/extract
  - B. 30 µg A431 whole cell lysate/extract
  - C. 30 µg HeLa whole cell lysate/extract
  - D. 30 µg HepG2 whole cell lysate/extract
- 5% SDS-PAGE

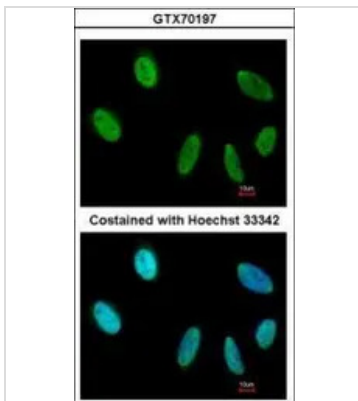
HET/SAF-B antibody [6F7] (GTX70197) dilution: 1:1000

The HRP-conjugated anti-mouse IgG antibody (GTX213111-01) was used to detect the primary antibody.



**GTX70197 WB Image**

Detection of human HET SAF-B protein in HeLa whole cell lysate using GeneTex monoclonal antibody GTX70197



**GTX70197 ICC/IF Image**

Immunofluorescence analysis of paraformaldehyde-fixed HeLa, using HET/SAF-B [6F7](GTX70197) antibody at 1:200 dilution.



For full product information, images and publications, please visit our [website](https://www.genetex.com).