

## Mre11 antibody [12D7]

Cat. No. GTX70212

Host	Mouse
Clonality	Monoclonal
Isotype	IgG1
Applications	WB, ICC/IF, IP, ELISA, Functional Assay, PLA
Reactivity	Human

References ( 179 )

★★★★★ Review ( 1 )

Package

100 µl

## PRODUCT

## Summary

MRE11 antibody recognizes MRE11 protein, an enzyme with a predicted molecular weight of ~81 kDa. MRE11 forms the core of the MRN (MRE11-RAD50-NBS1) complex, one of the first components of the DNA damage response (DDR) to DNA double-strand breaks where it recruits other signaling factors required for repair. MRE11 has both exonuclease and endonuclease activities, and is responsible for the DNA binding of the complex.

## Applications

## Application Note

\*Optimal dilutions/concentrations should be determined by the researcher.

Suggested dilution	Recommended dilution
WB	1:500-1:3000
ICC/IF	1:100-1:1000
IP	Assay dependent
ELISA	Assay dependent
Functional Assay	Assay dependent
PLA	Assay dependent

Not tested in other applications.

**Calculated MW** 81 kDa. ( [Note](#) )

**Product Note** We do not recommend use of this product for Mouse,Rat samples.

## Properties

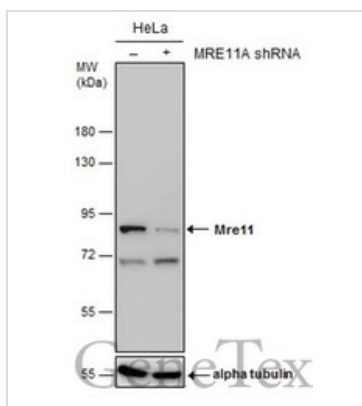
Form	Liquid
Buffer	PBS
Preservative	No preservative
Storage	Store as concentrated solution. Centrifuge briefly prior to opening vial. For short-term storage (1-2 weeks), store at 4°C. For long-term storage, aliquot and store at -20°C or below. Avoid multiple freeze-thaw cycles.
Concentration	0.45 mg/ml (Please refer to the vial label for the specific concentration.)



For full product information, images and publications, please visit our [website](#).

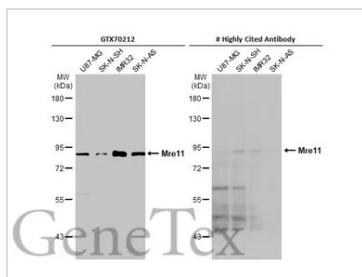
<b>Immunogen</b>	Amino acids 182-582 of Mre11 expressed in <i>E. coli</i> .
<b>Purification</b>	Protein G purified
<b>Conjugation</b>	Unconjugated
<b>Note</b>	For laboratory research use only. Not for any clinical, therapeutic, or diagnostic use in humans or animals. Not for animal or human consumption.  Purchasers shall not, and agree not to enable third parties to, analyze, copy, reverse engineer or otherwise attempt to determine the structure or sequence of the product.

## DATA IMAGES



### GTX70212 WB Image

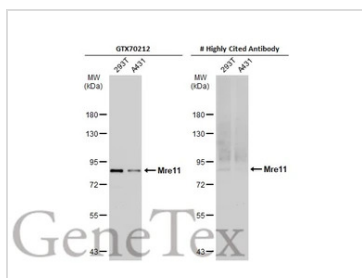
Non-transfected (–) and transfected (+) HeLa whole cell extracts (30 µg) were separated by 7.5% SDS-PAGE, and the membrane was blotted with Mre11 antibody [12D7] (GTX70212) diluted at 1:500. The HRP-conjugated anti-mouse IgG antibody (GTX213111-01) was used to detect the primary antibody.



### GTX70212 WB Image

Various whole cell extracts (30 µg) were separated by 7.5% SDS-PAGE, and the membranes were blotted with Mre11 antibody [12D7] (GTX70212) diluted at 1:1000 and competitor's antibody diluted at 1:500. The HRP-conjugated anti-mouse IgG antibody (GTX213111-01) was used to detect the primary antibody.

\*The competitor is not affiliated with GeneTex and does not endorse this product.



### GTX70212 WB Image

Various whole cell extracts (30 µg) were separated by 7.5% SDS-PAGE, and the membranes were blotted with Mre11 antibody [12D7] (GTX70212) diluted at 1:1000 and competitor's antibody diluted at 1:1000. The HRP-conjugated anti-mouse IgG antibody (GTX213111-01) was used to detect the primary antibody.

\*The competitor is not affiliated with GeneTex and does not endorse this product.



For full product information, images and publications, please visit our [website](https://www.genetex.com).