

p53 antibody [DO1]

Cat. No. GTX70214

Host	Mouse
Clonality	Monoclonal
Isotype	IgG2a
Applications	WB, ICC/IF, IHC-P, IHC-Fr, FCM, IP, ELISA
Reactivity	Human, Mouse

References (40)

★★★★★ Review (2)

Package

100 µl

PRODUCT

Summary

p53 antibody recognizes p53 protein, which has a predicted molecular weight of 44 kDa but is typically detected by western blot at 53 kDa. p53, known widely as a tumor suppressor, plays critical roles in various cellular processes including cell cycle regulation, DNA repair, and apoptosis. p53 is mutated in many human cancers.

Applications

Application Note

*Optimal dilutions/concentrations should be determined by the researcher.

Suggested dilution	Recommended dilution
WB	1:500-1:10000
ICC/IF	Assay dependent
IHC-P	1:1000
IHC-Fr	Assay dependent
FCM	Assay dependent
IP	1:100-1:500
ELISA	Assay dependent

Note : Antigen retrieval can be done with EDTA at pH8.0 - Some customers have stated that the product works well without antigen retrieval.

Not tested in other applications.

Calculated MW

44 kDa. ([Note](#))

Properties

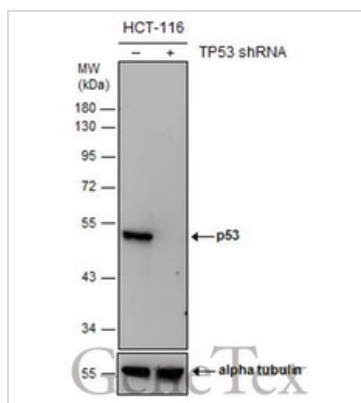
Form	Liquid
Buffer	PBS, 20% Glycerol
Preservative	No preservatives
Storage	Store as concentrated solution. Centrifuge briefly prior to opening vial. For short-term storage (1-2 weeks), store at 4°C. For long-term storage, aliquot and store at -20°C or below. Avoid multiple freeze-thaw cycles.
Concentration	0.25 mg/ml (Please refer to the vial label for the specific concentration.)



For full product information, images and publications, please visit our [website](#).

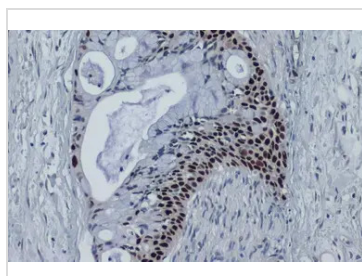
Immunogen	Recombinant human p53 expressed in E. coli.
Purification	Protein A purified From tissue culture supernatant
Conjugation	Unconjugated
Note	For laboratory research use only. Not for any clinical, therapeutic, or diagnostic use in humans or animals. Not for animal or human consumption. Purchasers shall not, and agree not to enable third parties to, analyze, copy, reverse engineer or otherwise attempt to determine the structure or sequence of the product.

DATA IMAGES



GTX70214 WB Image

Non-transfected (–) and transfected (+) HCT116 whole cell extracts (30 µg) were separated by 10% SDS-PAGE, and the membrane was blotted with p53 antibody [DO1] (GTX70214) diluted at 1:1000. The HRP-conjugated anti-mouse IgG antibody (GTX213111-01) was used to detect the primary antibody.



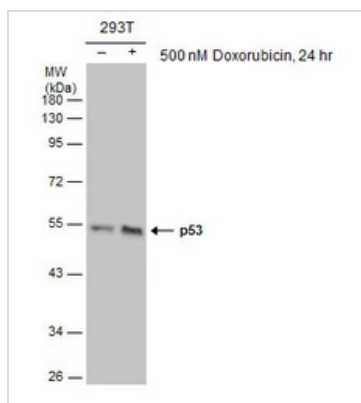
GTX70214 IHC-P Image

p53 antibody [DO1] detects p53 protein at nucleus by immunohistochemical analysis.

Sample: Paraffin-embedded human pancreatic cancer.

p53 stained by p53 antibody [DO1] (GTX70214) diluted at 1:100.

Antigen Retrieval: Citrate buffer, pH 6.0, 15 min



GTX70214 WB Image

Untreated (–) and treated (+) 293T whole cell extracts (30 µg) were separated by 10% SDS-PAGE, and the membrane was blotted with p53 antibody [DO1] (GTX70214) diluted at 1:1000. The HRP-conjugated anti-mouse IgG antibody (GTX213111-01) was used to detect the primary antibody.



For full product information, images and publications, please visit our [website](https://www.genetex.com).