

## NBS1 antibody [1D7]

Cat. No. GTX70224

Host	Mouse
Clonality	Monoclonal
Isotype	IgG1
Applications	WB, ICC/IF, IP
Reactivity	Human, Mouse, Rat

References ( 58 )

Package

100 µl

## Applications

## Application Note

\*Optimal dilutions/concentrations should be determined by the researcher.

Suggested dilution	Recommended dilution
WB	1:500-1:3000
ICC/IF	1:100
IP	Assay dependent

Not tested in other applications.

Calculated MW 85 kDa. ( [Note](#) )

## Properties

Form	Liquid
Buffer	PBS, 20% Glycerol
Preservative	No Preservative
Storage	Store as concentrated solution. Centrifuge briefly prior to opening vial. For short-term storage (1-2 weeks), store at 4°C. For long-term storage, aliquot and store at -20°C or below. Avoid multiple freeze-thaw cycles.
Concentration	1 mg/ml (Please refer to the vial label for the specific concentration.)
Immunogen	The complete coding region of the human p95/NBS1 expressed in E. coli.
Purification	Protein G purified
Conjugation	Unconjugated

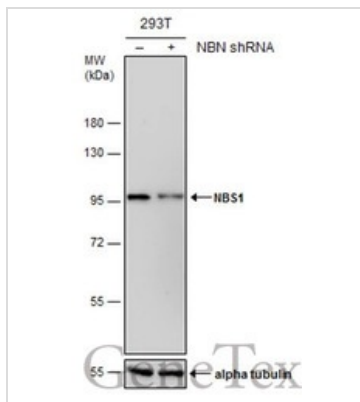
## Note

For laboratory research use only. Not for any clinical, therapeutic, or diagnostic use in humans or animals. Not for animal or human consumption.

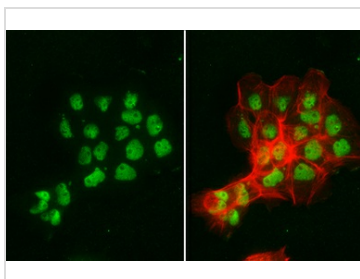
Purchasers shall not, and agree not to enable third parties to, analyze, copy, reverse engineer or otherwise attempt to determine the structure or sequence of the product.



For full product information, images and publications, please visit our [website](#).

**DATA IMAGES**

**GTX70224 WB Image**

Non-transfected (–) and transfected (+) 293T whole cell extracts (30 µg) were separated by 7.5% SDS-PAGE, and the membrane was blotted with NBS1 antibody [1D7] (GTX70224) diluted at 1:500. The HRP-conjugated anti-mouse IgG antibody (GTX213111-01) was used to detect the primary antibody.

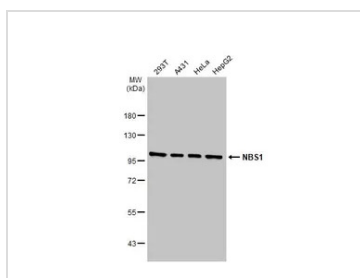

**GTX70224 ICC/IF Image**

NBS1 antibody [1D7] detects NBS1 protein at nucleus by immunofluorescent analysis.

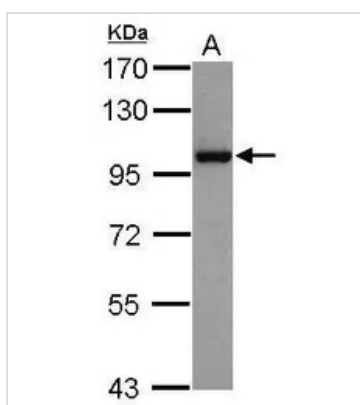
Sample: A431 cells were fixed in 4% paraformaldehyde at RT for 15 min.

Green: NBS1 stained by NBS1 antibody [1D7] (GTX70224) diluted at 1:500.

Red: phalloidin, a cytoskeleton marker, diluted at 1:200.


**GTX70224 WB Image**

Various whole cell extracts (30 µg) were separated by 7.5% SDS-PAGE, and the membrane was blotted with NBS1 antibody [1D7] (GTX70224) diluted at 1:500. The HRP-conjugated anti-mouse IgG antibody (GTX213111-01) was used to detect the primary antibody.


**GTX70224 WB Image**

Sample (30 µg of whole cell lysate)

A: HepG2 (GTX27900)

7.5% SDS PAGE

GTX70224 diluted at 1:1000

The HRP-conjugated anti-mouse IgG antibody (GTX213111-01) was used to detect the primary antibody.



For full product information, images and publications, please visit our [website](https://www.genetex.com).