

## Rad50 antibody [13B3]

Cat. No. GTX70228

Host	Mouse
Clonality	Monoclonal
Isotype	IgG1
Application	WB, ICC/IF, IHC-P, IP, ChIP assay, IHC, in vitro, PLA
Reactivity	Human, Mouse, Rat, Monkey

Reference ( 120 )

Package

100 µl

## PRODUCT

## Summary

Rad50 antibody detects RAD50, a ~154 kDa protein that, together with MRE11 and NBS1, forms the MRN complex that is intimately involved in DNA damage signaling, DNA double-strand break (DSB) repair, recombination, and replication. The complex is also involved other facets of genomic homeostasis including telomere maintenance. MRN plays a pivotal role in the DNA damage response (DDR) through interactions with ATM and ATR.

## APPLICATION

## Application Note

\*Optimal dilutions/concentrations should be determined by the researcher.

Suggested dilution	Recommended dilution
WB	1:500-1:3000
ICC/IF	1:100-1:1000
IHC-P	1:100-1:1000
IP	Assay dependent
ChIP assay	Assay dependent
IHC	Assay dependent
in vitro	Assay dependent
PLA	Assay dependent

Not tested in other applications.

**Calculated MW** 154 kDa. ( [Note](#) )

## PROPERTIES

Form	Liquid
Buffer	PBS
Preservative	No preservative
Storage	Store as concentrated solution. Centrifuge briefly prior to opening vial. For short-term storage (1-2 weeks), store at 4°C. For long-term storage, aliquot and store at -20°C or below. Avoid multiple freeze-thaw cycles.



For full product information, images and publications, please visit our [website](#).

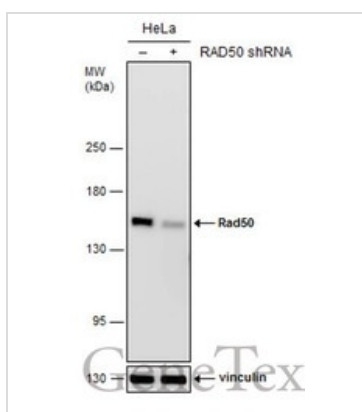
<b>Concentration</b>	1.7 mg/ml (Please refer to the vial label for the specific concentration.)
<b>Immunogen</b>	Amino acids 1-425 of Rad50 expressed in E. coli.
<b>Purification</b>	Affinity purified by Protein G.
<b>Conjugation</b>	Unconjugated

## Note

For laboratory research use only. Not for any clinical, therapeutic, or diagnostic use in humans or animals. Not for animal or human consumption.

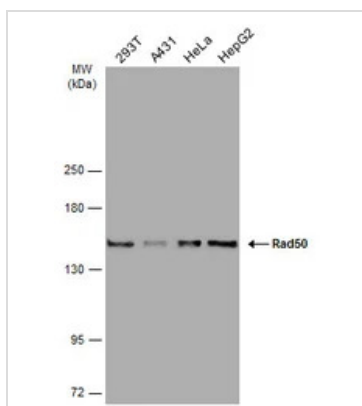
Purchasers shall not, and agree not to enable third parties to, analyze, copy, reverse engineer or otherwise attempt to determine the structure or sequence of the product.

## DATA IMAGES



### GTX70228 WB Image

Non-transfected (–) and transfected (+) HeLa whole cell extracts (30 µg) were separated by 5% SDS-PAGE, and the membrane was blotted with Rad50 antibody [13B3] (GTX70228) diluted at 1:500. The HRP-conjugated anti-mouse IgG antibody (GTX213111-01) was used to detect the primary antibody.



### GTX70228 WB Image

Various whole cell extracts (30 µg) were separated by 5% SDS-PAGE, and the membrane was blotted with Rad50 antibody [13B3] (GTX70228) diluted at 1:1000. The HRP-conjugated anti-mouse IgG antibody (GTX213111-01) was used to detect the primary antibody.



For full product information, images and publications, please visit our [website](https://www.genetex.com).