

RbAp48 antibody [11G10]

Cat. No. GTX70232

Host	Mouse
Clonality	Monoclonal
Isotype	IgG2b
Applications	WB, ICC/IF, IHC-P, IP, ChIP assay, Functional Assay, Blocking, IHC
Reactivity	Human, Mouse

References (11)

Package

100 µl

Applications

Application Note

*Optimal dilutions/concentrations should be determined by the researcher.

Suggested dilution	Recommended dilution
WB	1:500-1:3000
ICC/IF	Assay dependent
IHC-P	Assay dependent
IP	Assay dependent
ChIP assay	Assay dependent
Functional Assay	Assay dependent
Blocking	Assay dependent
IHC	Assay dependent

Not tested in other applications.

Calculated MW 48 kDa. ([Note](#))

Properties

Form	Liquid
Buffer	PBS
Preservative	No preservatives
Storage	Store as concentrated solution. Centrifuge briefly prior to opening vial. For short-term storage (1-2 weeks), store at 4°C. For long-term storage, aliquot and store at -20°C or below. Avoid multiple freeze-thaw cycles.
Concentration	1 mg/ml (Please refer to the vial label for the specific concentration.)
Immunogen	The complete coding region (amino acids 1-425) of RbAp48 expressed in E. coli.
Purification	Protein G purified From tissue culture supernatant



For full product information, images and publications, please visit our [website](#).

Conjugation

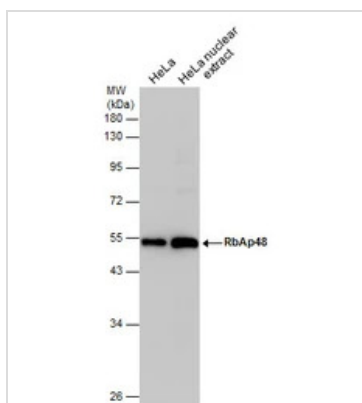
Unconjugated

For laboratory research use only. Not for any clinical, therapeutic, or diagnostic use in humans or animals. Not for animal or human consumption.

Note

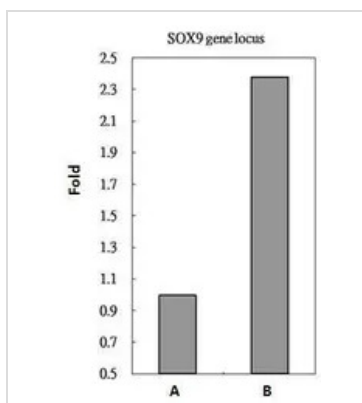
Purchasers shall not, and agree not to enable third parties to, analyze, copy, reverse engineer or otherwise attempt to determine the structure or sequence of the product.

DATA IMAGES



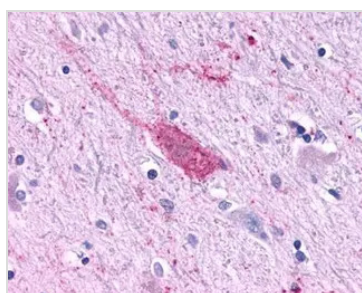
GTX70232 WB Image

HeLa whole cell and nuclear extracts (30 μ g) were separated by 10% SDS-PAGE, and the membrane was blotted with RbAp48 antibody [11G10] (GTX70232) diluted at 1:500. The HRP-conjugated anti-mouse IgG antibody (GTX213111-01) was used to detect the primary antibody.



GTX70232 ChIP assay Image

RbAp48 antibody immunoprecipitates RbAp48 protein-DNA in ChIP experiments. ChIP Sample: HeLa whole cell lysate/extract A. 5 μ g preimmune mouse IgG B. 5 μ g of RbAp48 antibody (GTX70232) The precipitated DNA was detected by PCR with primer set targeting to SOX9 gene locus.



GTX70232 IHC Image



For full product information, images and publications, please visit our [website](https://www.genetex.com).