

RbAp48 antibody [13D10]

Cat. No. GTX70234

Host	Mouse
Clonality	Monoclonal
Isotype	IgG2b
Applications	WB, ICC/IF, IP, IHC
Reactivity	Human

References (5)

Package

100 µl

Applications

Application Note

*Optimal dilutions/concentrations should be determined by the researcher.

Suggested dilution	Recommended dilution
WB	1:500-1:3000
ICC/IF	1:100-1:1000
IP	1:500
IHC	Assay dependent

Not tested in other applications.

Calculated MW 48 kDa. ([Note](#))

Properties

Form	Liquid
Buffer	PBS
Preservative	No preservative
Storage	Store as concentrated solution. Centrifuge briefly prior to opening vial. For short-term storage (1-2 weeks), store at 4°C. For long-term storage, aliquot and store at -20°C or below. Avoid multiple freeze-thaw cycles.
Concentration	1 mg/ml (Please refer to the vial label for the specific concentration.)
Immunogen	The complete coding region (amino acids 1-425) of RbAp48 expressed in E. coli.
Purification	Protein G purified From tissue culture supernatant
Conjugation	Unconjugated

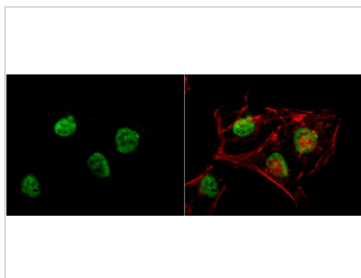


For full product information, images and publications, please visit our [website](#).

For laboratory research use only. Not for any clinical, therapeutic, or diagnostic use in humans or animals. Not for animal or human consumption.

Note

Purchasers shall not, and agree not to enable third parties to, analyze, copy, reverse engineer or otherwise attempt to determine the structure or sequence of the product.

DATA IMAGES

GTx70234 ICC/IF Image

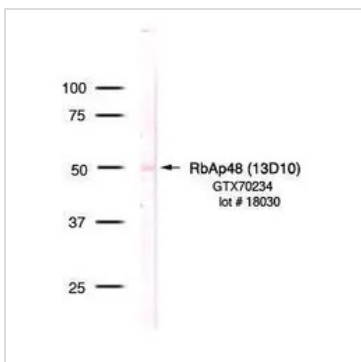
RbAp48 antibody [13D10] detects RbAp48 protein at nucleus by immunofluorescent analysis.

Sample: HeLa cells were fixed in 4% paraformaldehyde at RT for 15 min.

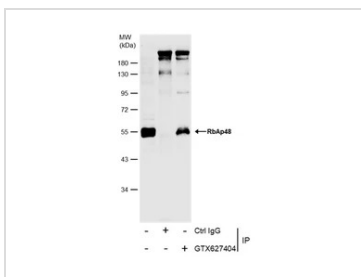
Green: RbAp48 protein stained by RbAp48 antibody [13D10] (GTx70234) diluted at 1:200.

Red: phalloidin, a cytoskeleton marker, stained by phalloidin (invitrogen, A12380) diluted at 1:200.

Blue: Hoechst 33342 staining.


GTx70234 WB Image

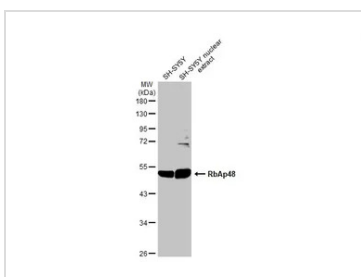
Detection of RbAp48 in HeLa nuclear extract (GTx24105)


GTx70234 IP Image

Immunoprecipitation of RbAp48 protein from HeLa whole cell extract using 5 µg of RbAp48 antibody [13D10] (GTx70234).

Western blot analysis was performed using RbAp48 antibody [13D10] (GTx70234).

EasyBlot HRP-conjugated anti mouse IgG antibody (GTx221667-01) was used to detect the primary antibody, and the signal was developed with Trident ECL plus-Enhanced.


GTx70234 WB Image

SH-SY5Y whole cell and nuclear extracts (30 µg) were separated by 10% SDS-PAGE, and the membrane was blotted with RbAp48 antibody [13D10] (GTx70234) diluted at 1:2000. The HRP-conjugated anti-mouse IgG antibody (GTx213111-01) was used to detect the primary antibody.



For full product information, images and publications, please visit our [website](https://www.genetex.com).