

## RbAp48 + RbAp46 antibody [15G12]

Cat. No. GTX70236

Host	Mouse
Clonality	Monoclonal
Isotype	IgG2a
Applications	WB, ICC/IF, IHC-P, IP, EMSA
Reactivity	Human, Mouse

References ( 9 )

Package

100 µl

## Applications

## Application Note

\*Optimal dilutions/concentrations should be determined by the researcher.

Suggested dilution	Recommended dilution
WB	1:500-1:3000
ICC/IF	1:100-1:1000
IHC-P	1:100-1:1000
IP	0.2 - 1 µg/ml
EMSA	Assay dependent

Not tested in other applications.

**Calculated MW** 46 and 48 kDa. ( [Note](#) )

## Properties

Form	Liquid
Buffer	PBS, 20% Glycerol
Preservative	No preservatives
Storage	Store as concentrated solution. Centrifuge briefly prior to opening vial. For short-term storage (1-2 weeks), store at 4°C. For long-term storage, aliquot and store at -20°C or below. Avoid multiple freeze-thaw cycles.
Concentration	1 mg/ml (Please refer to the vial label for the specific concentration.)
Immunogen	The complete coding region (amino acids 1-425) of RbAp48 expressed in E. coli.
Purification	Protein G purified From tissue culture supernatant
Conjugation	Unconjugated



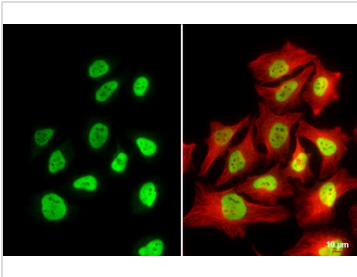
For full product information, images and publications, please visit our [website](#).

For laboratory research use only. Not for any clinical, therapeutic, or diagnostic use in humans or animals. Not for animal or human consumption.

## Note

Purchasers shall not, and agree not to enable third parties to, analyze, copy, reverse engineer or otherwise attempt to determine the structure or sequence of the product.

## DATA IMAGES



### GTx70236 ICC/IF Image

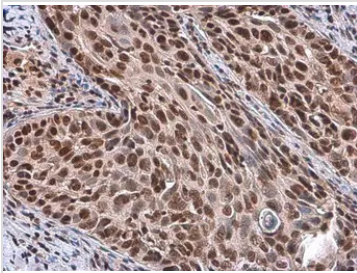
RbAp48 + RbAp46 antibody [15G12] detects RbAp48 + RbAp46 protein at nucleus by immunofluorescent analysis.

Sample: HeLa cells were fixed in 4% paraformaldehyde at RT for 15 min.

Green: RbAp48 + RbAp46 stained by RbAp48 + RbAp46 antibody [15G12] (GTx70236) diluted at 1:500.

Red: beta Tubulin, a cytoskeleton marker, stained by beta Tubulin antibody (GTx101279) diluted at 1:1000.

Scale bar= 10µm.



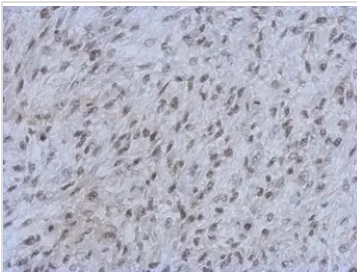
### GTx70236 IHC-P Image

RbAp48 + RbAp46 antibody [15G12] detects RbAp48 + RbAp46 protein at nucleus by immunohistochemical analysis.

Sample: Paraffin-embedded human cervical carcinoma.

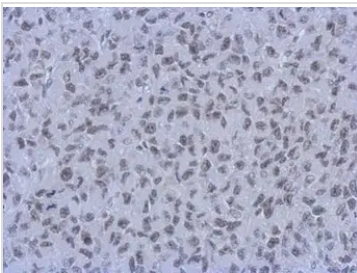
RbAp48 + RbAp46 stained by RbAp48 + RbAp46 antibody [15G12] (GTx70236) diluted at 1:100.

Antigen Retrieval: Citrate buffer, pH 6.0, 15 min



### GTx70236 IHC-P Image

Immunohistochemical analysis of paraffin-embedded C2C12 xenograft, using RbAp48 + RbAp46(GTx70236) antibody at 1:200 dilution.



### GTx70236 IHC-P Image

Immunohistochemical analysis of paraffin-embedded H1299 xenograft, using RbAp48 + RbAp46(GTx70236) antibody at 1:200 dilution.



For full product information, images and publications, please visit our [website](https://www.genetex.com).