

## RPA14 antibody [11.1]

**Cat. No. GTX70238**

<b>Host</b>	Mouse
<b>Clonality</b>	Monoclonal
<b>Isotype</b>	IgG1
<b>Applications</b>	WB, IHC-P, IP
<b>Reactivity</b>	Human, Mouse

References ( 2 )  
 Package  
 100 µl

## Applications

**Application Note**

\*Optimal dilutions/concentrations should be determined by the researcher.

Suggested dilution	Recommended dilution
WB	0.1 - 2 µg/ml
IHC-P	1:100-1:1000
IP	0.1 - 2 µg/ml

Not tested in other applications.

**Calculated MW** 14 kDa. ( [Note](#) )

## Properties

<b>Form</b>	Liquid
<b>Buffer</b>	PBS
<b>Preservative</b>	No preservatives
<b>Storage</b>	Store as concentrated solution. Centrifuge briefly prior to opening vial. For short-term storage (1-2 weeks), store at 4°C. For long-term storage, aliquot and store at -20°C or below. Avoid multiple freeze-thaw cycles.
<b>Concentration</b>	1 mg/ml (Please refer to the vial label for the specific concentration.)
<b>Immunogen</b>	Full-length human RPA-14 expressed in E. coli..
<b>Purification</b>	Protein G purified From tissue culture supernatant
<b>Conjugation</b>	Unconjugated

**Note**

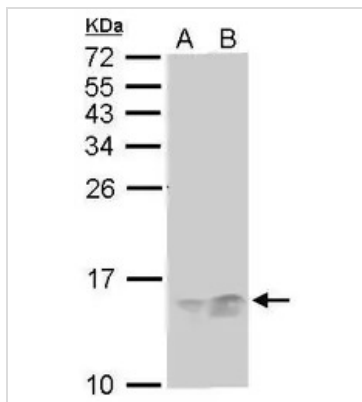
For laboratory research use only. Not for any clinical, therapeutic, or diagnostic use in humans or animals. Not for animal or human consumption.

Purchasers shall not, and agree not to enable third parties to, analyze, copy, reverse engineer or otherwise attempt to determine the structure or sequence of the product.



For full product information, images and publications, please visit our [website](#).

## DATA IMAGES

**GTX70238 WB Image**

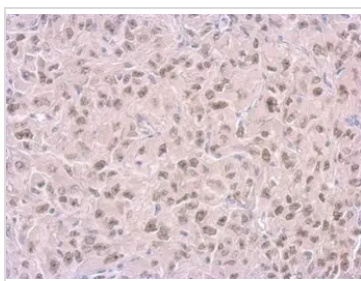
RPA14 antibody [11.1] detects RPA14 protein by Western blot analysis.

A. 30  $\mu$ g A549 whole cell lysate/extract

B. 30  $\mu$ g MCF-7 whole cell lysate/extract

15 % SDS-PAGE

RPA14 antibody [11.1] (GTX70238) dilution: 1:1000

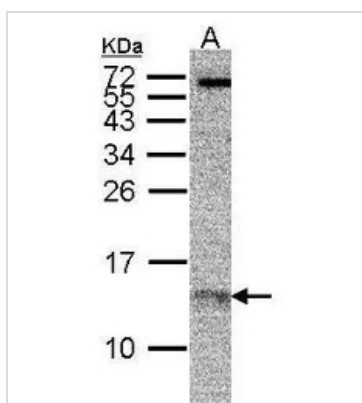
**GTX70238 IHC-P Image**

RPA14 antibody [11.1] detects RPA14 protein at nucleus on Mahlarvu xenograft by immunohistochemical analysis.

Sample: Paraffin-embedded Mahlarvu xenograft.

RPA14 antibody [11.1] (GTX70238) dilution: 1:200.

Antigen Retrieval: Trilogy™ (EDTA based, pH 8.0) buffer, 15min

**GTX70238 WB Image**

Sample (30 ug of whole cell lysate)

A: MCF7

15% SDS PAGE

GTX70238 diluted at 1:500



For full product information, images and publications, please visit our [website](#).