

RPA32 antibody

Cat. No. GTX70242

Host	Mouse
Clonality	Polyclonal
Isotype	IgG
Applications	WB, ICC/IF
Reactivity	Human, Mouse

Package
100 µl

Applications

Application Note

For WB: Use at 1:500-1:1000. For ICC/IF: Use at 1:100-1:1000. Optimal dilutions/concentrations should be determined by the researcher.

Calculated MW 29 kDa. ([Note](#))

Properties

Form	Liquid
Buffer	Serum diluted with PBS
Preservative	No preservatives
Storage	Store as concentrated solution. Centrifuge briefly prior to opening vial. For short-term storage (1-2 weeks), store at 4°C. For long-term storage, aliquot and store at -20°C or below. Avoid multiple freeze-thaw cycles.
Immunogen	Full-length human RPA-32 expressed in E. coli.
Purification	Unpurified
Conjugation	Unconjugated

Note

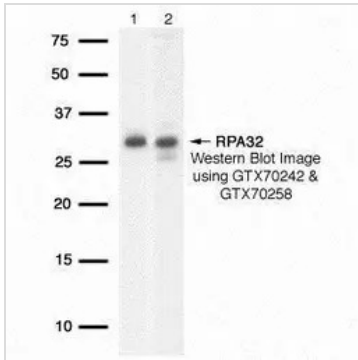
For laboratory research use only. Not for any clinical, therapeutic, or diagnostic use in humans or animals. Not for animal or human consumption.

Purchasers shall not, and agree not to enable third parties to, analyze, copy, reverse engineer or otherwise attempt to determine the structure or sequence of the product.



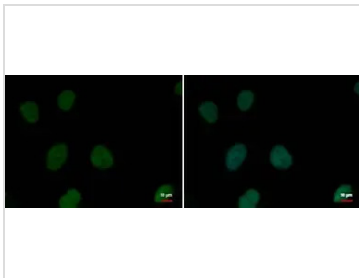
For full product information, images and publications, please visit our [website](#).

DATA IMAGES



GTX70242 WB Image

Detection of human RPA32 protein using GeneTex RPA32 mouse polyclonal antiserum (GTX70242) shown in lane 1 and GeneTex RPA32 rabbit polyclonal antiserum (GTX70258) shown in lane 2. Western Blot was done using HeLa whole cell extract.



GTX70242 ICC/IF Image

RPA32 antibody detects RPA32 protein at nucleus by immunofluorescent analysis.

Sample: HeLa cells were fixed in 4% paraformaldehyde at RT for 15 min.

Green: RPA32 protein stained by RPA32 antibody (GTX70242) diluted at 1:500.

Blue: Hoechst 33342 staining.



For full product information, images and publications, please visit our [website](https://www.genetex.com).