

RPA32 antibody [12F3.3]

Cat. No. GTX70243

Host	Mouse
Clonality	Monoclonal
Isotype	IgG2a
Applications	WB, ICC/IF, IP
Reactivity	Human, Mouse

References (2)

Package

100 µl

Applications

Application Note

*Optimal dilutions/concentrations should be determined by the researcher.

Suggested dilution	Recommended dilution
WB	1:500-1:3000
ICC/IF	1:100-1:1000
IP	Assay dependent

Not tested in other applications.

Calculated MW 29 kDa. ([Note](#))

Properties

Form	Liquid
Buffer	PBS
Preservative	No preservatives
Storage	Store as concentrated solution. Centrifuge briefly prior to opening vial. For short-term storage (1-2 weeks), store at 4°C. For long-term storage, aliquot and store at -20°C or below. Avoid multiple freeze-thaw cycles.
Concentration	1 mg/ml (Please refer to the vial label for the specific concentration.)
Immunogen	Full-length human RPA-32 expressed in E. coli.
Purification	Protein G purified From tissue culture supernatant
Conjugation	Unconjugated

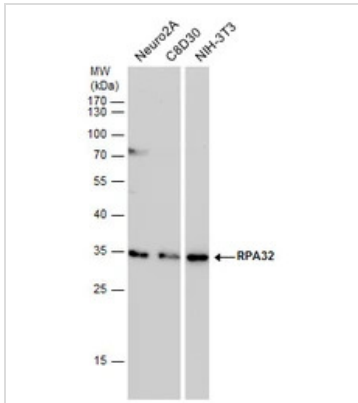
Note

For laboratory research use only. Not for any clinical, therapeutic, or diagnostic use in humans or animals. Not for animal or human consumption.

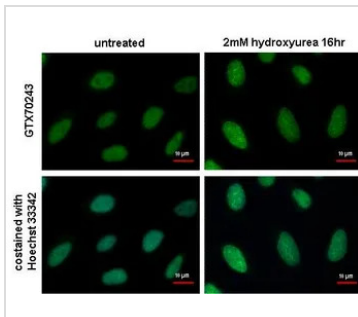
Purchasers shall not, and agree not to enable third parties to, analyze, copy, reverse engineer or otherwise attempt to determine the structure or sequence of the product.



For full product information, images and publications, please visit our [website](#).

DATA IMAGES

GTx70243 WB Image

RPA32 antibody detects RPA32 protein by western blot analysis. Various whole cell extracts (30 µg) were separated by 12% SDS-PAGE, and blotted with RPA32 antibody (GTx70243) diluted by 1:500. The HRP-conjugated anti-mouse IgG antibody (GTx213111-01) was used to detect the primary antibody.

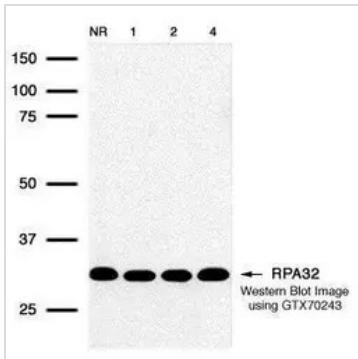

GTx70243 ICC/IF Image

RPA32 antibody [12F3.3] detects RPA32 protein at DNA damage foci by immunofluorescent analysis. Sample: 2mM hydroxyurea treated (right) or untreated (left) HeLa cells were fixed in ice-cold MeOH for 5 min.

Green: RPA32 protein stained by RPA32 antibody [12F3.3] (GTx70243) diluted at 1:1000.

Blue: Hoechst 33342 staining.

Scale bar = 10 µm.


GTx70243 WB Image

Detection of human RPA32 protein using GeneTex RPA32 12F3.3 monoclonal antibody (GTx70243) in HeLa (IR treated) whole cell extract. No radiation, 1hr, 2hr, and 4hr exposure corresponding to lanes 1 through 4 respectively.



For full product information, images and publications, please visit our [website](https://www.genetex.com).