

## SRC1 antibody [1135]

Cat. No. GTX70250

Host	Mouse
Clonality	Monoclonal
Isotype	IgG1
Applications	WB, IP, ChIP assay
Reactivity	Human, Mouse, Rat, Monkey

References ( 4 )

Package

100 µl

## Applications

## Application Note

\*Optimal dilutions/concentrations should be determined by the researcher.

Suggested dilution	Recommended dilution
WB	1:500-1:3000
IP	0.5 - 2 µg/ml
ChIP assay	Assay dependent

Not tested in other applications.

**Calculated MW** 157 kDa. ( [Note](#) )

## Properties

Form	Liquid
Buffer	PBS
Preservative	No preservatives
Storage	Store as concentrated solution. Centrifuge briefly prior to opening vial. For short-term storage (1-2 weeks), store at 4°C. For long-term storage, aliquot and store at -20°C or below. Avoid multiple freeze-thaw cycles.
Concentration	1 mg/ml (Please refer to the vial label for the specific concentration.)
Immunogen	Amino acids 477-947 of human SRC-1.
Purification	Protein G purified From tissue culture supernatant
Conjugation	Unconjugated

## Note

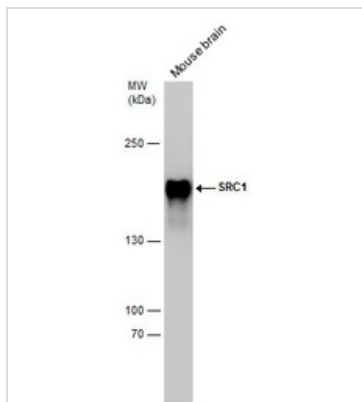
For laboratory research use only. Not for any clinical, therapeutic, or diagnostic use in humans or animals. Not for animal or human consumption.

Purchasers shall not, and agree not to enable third parties to, analyze, copy, reverse engineer or otherwise attempt to determine the structure or sequence of the product.



For full product information, images and publications, please visit our [website](#).

## DATA IMAGES



### GTx70250 WB Image

Mouse tissue (50  $\mu$ g) was separated by 5% SDS-PAGE, and the membrane was blotted with SRC1 antibody [1135] (GTx70250) diluted at 1:2000.



For full product information, images and publications, please visit our [website](#).