

TSG101 antibody [4A10]

Cat. No. GTX70255

Host	Mouse
Clonality	Monoclonal
Isotype	IgG1
Applications	WB, ICC/IF, IHC-P, FCM, IP, ELISA, EM, IHC, IHC (Free Floating)
Reactivity	Human, Mouse, Rat, Zebrafish, Dog, Hamster, Pig, Monkey

References (230)

★★★★★ Review (1)

Package
100 µl

PRODUCT

Summary

TSG101 antibody [4A10] is a well-validated and highly cited mouse monoclonal antibody that detects TSG101, a protein of 390 amino acids and a predicted molecular weight of 44 kDa that is a core constituent of the ESCRT-I complex. Reports have described it having both tumor suppressor and tumor enhancer activities. TSG101 is involved in exosome secretion and is commonly used as an exosome marker.

Applications

Application Note

*Optimal dilutions/concentrations should be determined by the researcher.

Suggested dilution	Recommended dilution
WB	1:500-1:3000
ICC/IF	1:500-1:1000
IHC-P	1:100-1:1000
FCM	1:25-1:200
IP	Assay dependent
ELISA	Assay dependent
EM	Assay dependent
IHC	1:100
IHC (Free Floating)	Assay dependent

Not tested in other applications.

Calculated MW 44 kDa. ([Note](#))

Product Note Knockdown/Knockout validation was supported by references (PMID:27226592)

Properties

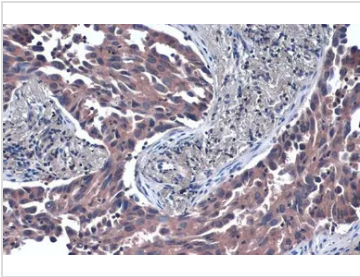
Form	Liquid
Buffer	PBS
Preservative	No preservatives



For full product information, images and publications, please visit our [website](#).

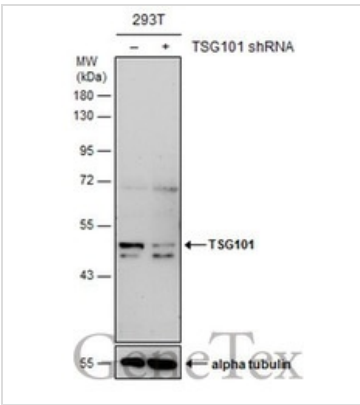
Storage	Store as concentrated solution. Centrifuge briefly prior to opening vial. For short-term storage (1-2 weeks), store at 4°C. For long-term storage, aliquot and store at -20°C or below. Avoid multiple freeze-thaw cycles.
Concentration	1.8 mg/ml (Please refer to the vial label for the specific concentration.)
Immunogen	Amino acids 167-374 of TSG101 protein expressed in E. coli.
Purification	Purified by antigen-affinity chromatography. From tissue culture supernatant
Conjugation	Unconjugated
Note	For laboratory research use only. Not for any clinical, therapeutic, or diagnostic use in humans or animals. Not for animal or human consumption. Purchasers shall not, and agree not to enable third parties to, analyze, copy, reverse engineer or otherwise attempt to determine the structure or sequence of the product.

DATA IMAGES



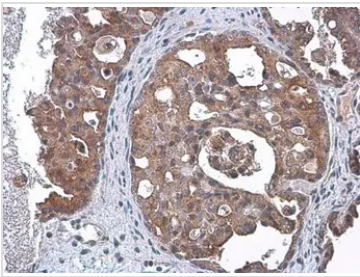
GTX70255 IHC-P Image

TSG101 antibody [4A10] detects TSG101 protein at cytoplasm by immunohistochemical analysis.
 Sample: Paraffin-embedded human lung cancer.
 TSG101 stained by TSG101 antibody [4A10] (GTX70255) diluted at 1:50.
 Antigen Retrieval: Citrate buffer, pH 6.0, 15 min



GTX70255 WB Image

Non-transfected (-) and transfected (+) 293T whole cell extracts (30 µg) were separated by 10% SDS-PAGE, and the membrane was blotted with TSG101 antibody [4A10] (GTX70255) diluted at 1:500. The HRP-conjugated anti-mouse IgG antibody (GTX213111-01) was used to detect the primary antibody.



GTX70255 IHC-P Image

TSG101 antibody [4A10] detects TSG101 protein at cytoplasm by immunohistochemical analysis.
 Sample: Paraffin-embedded human ovarian cancer.
 TSG101 stained by TSG101 antibody [4A10] (GTX70255) diluted at 1:100.
 Antigen Retrieval: Citrate buffer, pH 6.0, 15 min



For full product information, images and publications, please visit our [website](#).