

CtIP antibody [19E8]

Cat. No. GTX70264

Host	Mouse
Clonality	Monoclonal
Isotype	IgG1
Applications	WB, ICC/IF, IP, ChIP assay, PLA
Reactivity	Human, Mouse

References (8)

Package

100 µl

Applications

Application Note

*Optimal dilutions/concentrations should be determined by the researcher.

Suggested dilution	Recommended dilution
WB	1:500-1:1000
ICC/IF	1:100-1:1000
IP	Assay dependent
ChIP assay	Assay dependent
PLA	Assay dependent

Note : 3% Milk/TBST overnight

Not tested in other applications.

Calculated MW 102 kDa. ([Note](#))**Product Note** KO/KD validation is based on published data (PMID: 27131361).

Properties

Form	Liquid
Buffer	PBS, 20% Glycerol
Preservative	No preservatives
Storage	Store as concentrated solution. Centrifuge briefly prior to opening vial. For short-term storage (1-2 weeks), store at 4°C. For long-term storage, aliquot and store at -20°C or below. Avoid multiple freeze-thaw cycles.
Concentration	1 mg/ml (Please refer to the vial label for the specific concentration.)
Immunogen	Human CtIP
Purification	Protein G purified
Conjugation	Unconjugated

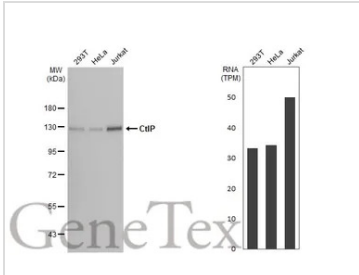


For full product information, images and publications, please visit our [website](#).

For laboratory research use only. Not for any clinical, therapeutic, or diagnostic use in humans or animals. Not for animal or human consumption.

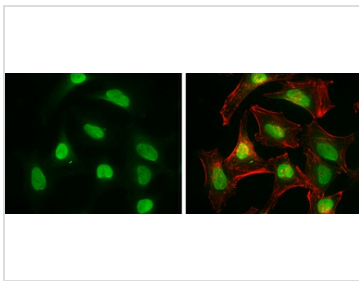
Note
 Purchasers shall not, and agree not to enable third parties to, analyze, copy, reverse engineer or otherwise attempt to determine the structure or sequence of the product.

DATA IMAGES



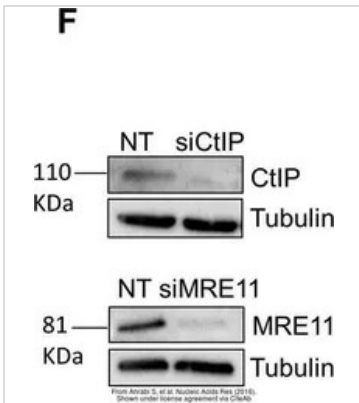
GTX70264 WB Image

Various whole cell extracts (30 µg) were separated by 7.5% SDS-PAGE, and the membrane was blotted with CtIP antibody [19E8] (GTX70264) diluted at 1:1000. The HRP-conjugated anti-mouse IgG antibody (GTX213111-01) was used to detect the primary antibody, and the signal was developed with Trident ECL plus-Enhanced. Corresponding RNA expression data for the same cell lines are based on Human Protein Atlas program.



GTX70264 ICC/IF Image

CtIP antibody [19E8] detects CtIP protein at nucleus by immunofluorescent analysis. Sample: HeLa cells were fixed in 4% paraformaldehyde at RT for 15 min. Green: CtIP protein stained by CtIP antibody [19E8] (GTX70264) diluted at 1:100. Red: Phalloidin, a cytoskeleton marker, diluted at 1:100.



GTX70264 WB Image

The data was published in the journal Nucleic Acids Res in 2016. [PMID: 27131361](https://pubmed.ncbi.nlm.nih.gov/27131361/)



For full product information, images and publications, please visit our [website](http://www.genetex.com).