

## GPX7 antibody [2704]

Cat. No. GTX70266

|              |                |
|--------------|----------------|
| Host         | Mouse          |
| Clonality    | Monoclonal     |
| Isotype      | IgG2a          |
| Applications | WB, IHC-P, IHC |
| Reactivity   | Human, Mouse   |

References ( 6 )

Package

100 µl

## Applications

## Application Note

\*Optimal dilutions/concentrations should be determined by the researcher.

| Suggested dilution | Recommended dilution |
|--------------------|----------------------|
| WB                 | 1:500-1:2000         |
| IHC-P              | 1:200-1:500          |
| IHC                | Assay dependent      |

Not tested in other applications.

Calculated MW 21 kDa. ( [Note](#) )

## Properties

|               |  |
|---------------|--|
| Form          | Liquid   |
| Buffer        | PBS, 20% Glycerol  |
| Preservative  | No preservatives   |
| Storage       | Store as concentrated solution. Centrifuge briefly prior to opening vial. For short-term storage (1-2 weeks), store at 4°C. For long-term storage, aliquot and store at -20°C or below. Avoid multiple freeze-thaw cycles. |
| Concentration | 1 mg/ml (Please refer to the vial label for the specific concentration.)   |
| Immunogen     | Human GPX7   |
| Purification  | Protein G purified   |
| Conjugation   | Unconjugated   |

## Note

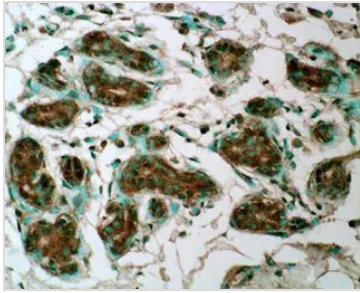
For laboratory research use only. Not for any clinical, therapeutic, or diagnostic use in humans or animals. Not for animal or human consumption.

Purchasers shall not, and agree not to enable third parties to, analyze, copy, reverse engineer or otherwise attempt to determine the structure or sequence of the product.

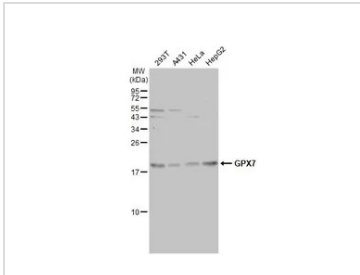


For full product information, images and publications, please visit our [website](#).

## DATA IMAGES

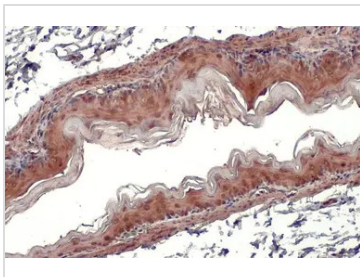


**GTx70266 IHC Image**



**GTx70266 WB Image**

Various whole cell extracts (30  $\mu$ g) were separated by 15% SDS-PAGE, and the membrane was blotted with GPX7 antibody [2704] (GTx70266) diluted at 1:1000. The HRP-conjugated anti-mouse IgG antibody (GTx213111-01) was used to detect the primary antibody, and the signal was developed with Trident ECL plus-Enhanced.



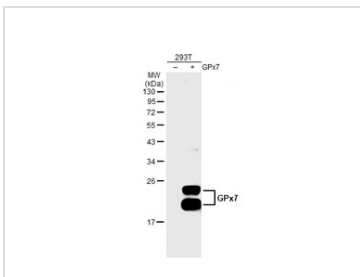
**GTx70266 IHC-P Image**

GPX7 antibody [2704] detects GPX7 protein at cytoplasm by immunohistochemical analysis.

Sample: Paraffin-embedded mouse stomach.

GPX7 stained by GPX7 antibody [2704] (GTx70266) diluted at 1:100.

Antigen Retrieval: Citrate buffer, pH 6.0, 15 min



**GTx70266 WB Image**

Non-transfected (-) and transfected (+) 293T whole cell extracts (30  $\mu$ g) were separated by 12% SDS-PAGE, and the membrane was blotted with GPX7 antibody [2704] (GTx70266) diluted at 1:500. The HRP-conjugated anti-mouse IgG antibody (GTx213111-01) was used to detect the primary antibody.



For full product information, images and publications, please visit our [website](https://www.genetex.com).