

Ku70 antibody

Cat. No. GTX70270

Host	Mouse
Clonality	Polyclonal
Isotype	IgG
Applications	WB
Reactivity	Human

References (1)

Package

100 µl

Applications

Application Note

For WB: Use at a dilution of 1:1,000. Optimal dilutions/concentrations should be determined by the researcher.

Calculated MW 70 kDa. ([Note](#))

Properties

Form	Liquid
Buffer	Serum diluted with PBS
Preservative	No preservatives
Storage	Store as concentrated solution. Centrifuge briefly prior to opening vial. For short-term storage (1-2 weeks), store at 4°C. For long-term storage, aliquot and store at -20°C or below. Avoid multiple freeze-thaw cycles.
Immunogen	Recombinant antigen containing the amino terminal portion of human Ku70 protein
Purification	Unpurified
Conjugation	Unconjugated

Note

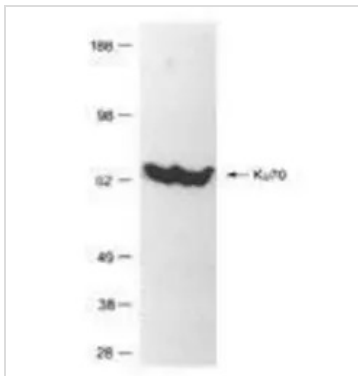
For laboratory research use only. Not for any clinical, therapeutic, or diagnostic use in humans or animals. Not for animal or human consumption.

Purchasers shall not, and agree not to enable third parties to, analyze, copy, reverse engineer or otherwise attempt to determine the structure or sequence of the product.



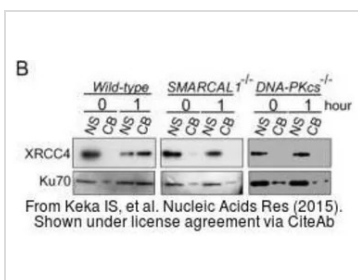
For full product information, images and publications, please visit our [website](#).

DATA IMAGES



GTx70270 WB Image

Detection of human Ku70 protein by Western Blot using GeneTex Ku70 polyclonal antiserum (GTx70270) in HeLa whole cell extract (lane 1) and Raji whole cell lysate (lane 2).



GTx70270 WB Image

The data was published in the journal Nucleic Acids Res in 2015. [PMID: 26089390](https://pubmed.ncbi.nlm.nih.gov/26089390/)



For full product information, images and publications, please visit our [website](https://www.genetex.com).