

Ku80 antibody

Cat. No. GTX70273

Host	Mouse
Clonality	Polyclonal
Isotype	IgG
Applications	WB
Reactivity	Human

Package

50 µl

Applications

Application Note

For WB: Use at a dilution of 1:1,000. Optimal dilutions/concentrations should be determined by the researcher.

Calculated MW 83 kDa. ([Note](#))

Properties

Form	Liquid
Buffer	PBS
Preservative	No preservatives
Storage	Store as concentrated solution. Centrifuge briefly prior to opening vial. For short-term storage (1-2 weeks), store at 4°C. For long-term storage, aliquot and store at -20°C or below. Avoid multiple freeze-thaw cycles.
Immunogen	Recombinant antigen containing the amino terminal portion of human Ku80 protein
Purification	Mouse Polyclonal Antiserum Antiserum
Conjugation	Unconjugated

Note

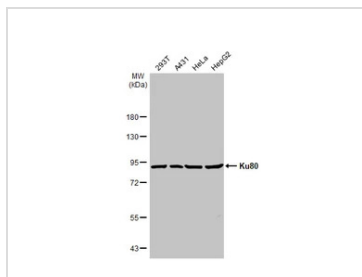
For laboratory research use only. Not for any clinical, therapeutic, or diagnostic use in humans or animals. Not for animal or human consumption.

Purchasers shall not, and agree not to enable third parties to, analyze, copy, reverse engineer or otherwise attempt to determine the structure or sequence of the product.



For full product information, images and publications, please visit our [website](#).

DATA IMAGES



GTX70273 WB Image

Various whole cell extracts (30 µg) were separated by 7.5% SDS-PAGE, and the membrane was blotted with Ku80 antibody (GTX70273) diluted at 1:1000. The HRP-conjugated anti-rabbit IgG antibody (GTX213110-01) was used to detect the primary antibody.



For full product information, images and publications, please visit our [website](https://www.genetex.com).