

Ku80 antibody [149.8]

Cat. No. GTX70276

Host	Mouse
Clonality	Monoclonal
Isotype	IgG1
Applications	WB, ICC/IF
Reactivity	Human, Monkey

References (2)

Package

100 µl

Applications

Application Note

*Optimal dilutions/concentrations should be determined by the researcher.

Suggested dilution	Recommended dilution
WB	1:1000-1:10000
ICC/IF	1:100-1:1000

Not tested in other applications.

Calculated MW 83 kDa. ([Note](#))**Product Note** KO/KD validation is based on published data (PMID: 28855246).

Properties

Form	Liquid
Buffer	PBS
Preservative	No preservatives
Storage	Store as concentrated solution. Centrifuge briefly prior to opening vial. For short-term storage (1-2 weeks), store at 4°C. For long-term storage, aliquot and store at -20°C or below. Avoid multiple freeze-thaw cycles.
Concentration	1 mg/ml (Please refer to the vial label for the specific concentration.)
Immunogen	Recombinant antigen containing the carboxy terminal portion of human Ku80 protein
Purification	Protein G purified
Conjugation	Unconjugated

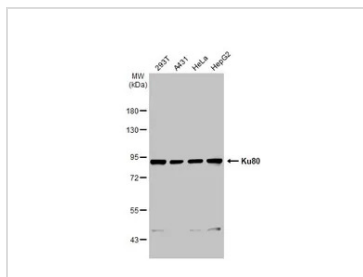
Note

For laboratory research use only. Not for any clinical, therapeutic, or diagnostic use in humans or animals. Not for animal or human consumption.

Purchasers shall not, and agree not to enable third parties to, analyze, copy, reverse engineer or otherwise attempt to determine the structure or sequence of the product.

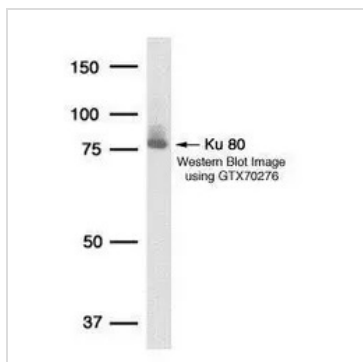
For full product information, images and publications, please visit our [website](#).

DATA IMAGES



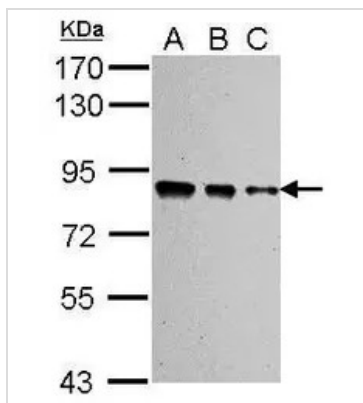
GTX70276 WB Image

Various whole cell extracts (30 µg) were separated by 7.5% SDS-PAGE, and the membrane was blotted with Ku80 antibody [149.8] (GTX70276) diluted at 1:1000. The HRP-conjugated anti-mouse IgG antibody (GTX213111-01) was used to detect the primary antibody.



GTX70276 WB Image

Detection of human Ku80 protein in HeLa whole cell lysate using GeneTex Ku80 149.8 monoclonal antibody GTX70276.



GTX70276 WB Image

Sample (whole cell lysate)
 A: 293T 20ug
 B: 293T 10ug
 C: 293T 5ug
 7.5% SDS PAGE
 GTX70276 diluted at 1:10000



For full product information, images and publications, please visit our [website](#).