

## Ku80 antibody [149.8]

**Cat. No. GTX70276**

<b>Host</b>	Mouse
<b>Clonality</b>	Monoclonal
<b>Isotype</b>	IgG1
<b>Applications</b>	WB, ICC/IF
<b>Reactivity</b>	Human, Monkey

References ( 2 )

Package

100 µl

## Applications

**Application Note**

\*Optimal dilutions/concentrations should be determined by the researcher.

Suggested dilution	Recommended dilution
WB	1:1000-1:10000
ICC/IF	1:100-1:1000

Not tested in other applications.

**Calculated MW** 83 kDa. ( [Note](#) )**Product Note** KO/KD validation is based on published data (PMID: 28855246).

## Properties

<b>Form</b>	Liquid
<b>Buffer</b>	PBS
<b>Preservative</b>	No preservatives
<b>Storage</b>	Store as concentrated solution. Centrifuge briefly prior to opening vial. For short-term storage (1-2 weeks), store at 4°C. For long-term storage, aliquot and store at -20°C or below. Avoid multiple freeze-thaw cycles.
<b>Concentration</b>	1 mg/ml (Please refer to the vial label for the specific concentration.)
<b>Immunogen</b>	Recombinant antigen containing the carboxy terminal portion of human Ku80 protein
<b>Purification</b>	Protein G purified
<b>Conjugation</b>	Unconjugated

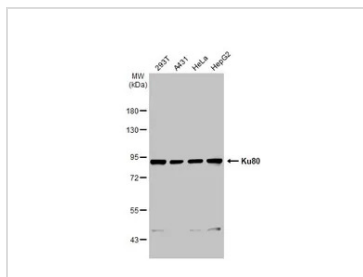
**Note**

For laboratory research use only. Not for any clinical, therapeutic, or diagnostic use in humans or animals. Not for animal or human consumption.

Purchasers shall not, and agree not to enable third parties to, analyze, copy, reverse engineer or otherwise attempt to determine the structure or sequence of the product.

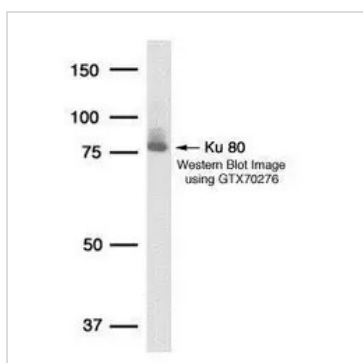
For full product information, images and publications, please visit our [website](#).

DATA IMAGES



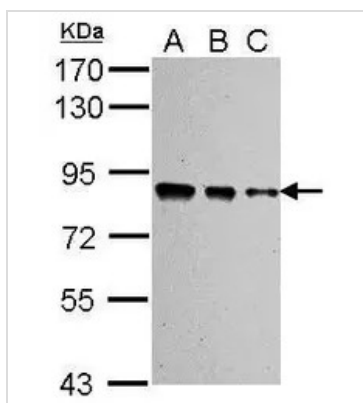
**GTX70276 WB Image**

Various whole cell extracts (30 µg) were separated by 7.5% SDS-PAGE, and the membrane was blotted with Ku80 antibody [149.8] (GTX70276) diluted at 1:1000. The HRP-conjugated anti-mouse IgG antibody (GTX213111-01) was used to detect the primary antibody.



**GTX70276 WB Image**

Detection of human Ku80 protein in HeLa whole cell lysate using GeneTex Ku80 149.8 monoclonal antibody GTX70276.



**GTX70276 WB Image**

Sample (whole cell lysate)  
 A: 293T 20ug  
 B: 293T 10ug  
 C: 293T 5ug  
 7.5% SDS PAGE  
 GTX70276 diluted at 1:10000



For full product information, images and publications, please visit our [website](#).