

# p37 antibody

**Cat. No. GTX70287**

<b>Host</b>	Mouse
<b>Clonality</b>	Polyclonal
<b>Isotype</b>	IgG
<b>Applications</b>	WB, ICC/IF
<b>Reactivity</b>	Human

**Package**  
100 µl

## Applications

### Application Note

For WB: Use at a dilution of 1:2,000. Detects a band of approximately 37 kDa (predicted molecular weight: 37 kDa). Not tested in other species. Optimal dilutions/concentrations should be determined by the researcher.

**Calculated MW** 40 kDa. ( [Note](#) )

## Properties

<b>Form</b>	Liquid
<b>Buffer</b>	Serum diluted with PBS
<b>Preservative</b>	No preservatives
<b>Storage</b>	Store as concentrated solution. Centrifuge briefly prior to opening vial. For short-term storage (1-2 weeks), store at 4°C. For long-term storage, aliquot and store at -20°C or below. Avoid multiple freeze-thaw cycles.
<b>Immunogen</b>	Recombinant protein encoding the full-length p37 subunit of human RFC purified from E. coli.
<b>Purification</b>	Unpurified
<b>Conjugation</b>	Unconjugated

### Note

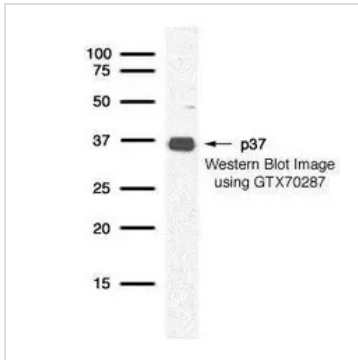
For laboratory research use only. Not for any clinical, therapeutic, or diagnostic use in humans or animals. Not for animal or human consumption.

Purchasers shall not, and agree not to enable third parties to, analyze, copy, reverse engineer or otherwise attempt to determine the structure or sequence of the product.

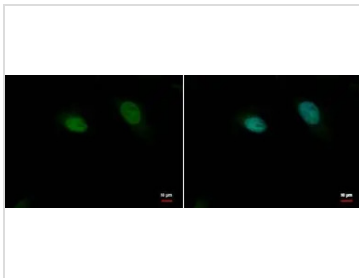


For full product information, images and publications, please visit our [website](#).

## DATA IMAGES



**GTX70287 WB Image**



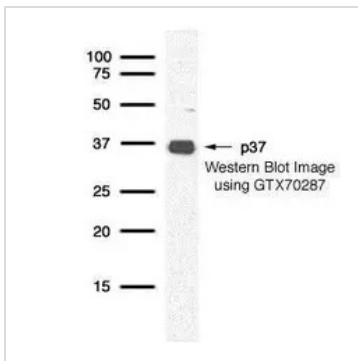
**GTX70287 ICC/IF Image**

p37 antibody detects p37 protein at nucleus by immunofluorescent analysis.

Sample: HeLa cells were fixed in 4% paraformaldehyde at RT for 15 min.

Green: p37 protein stained by p37 antibody (GTX70287) diluted at 1:500.

Blue: Hoechst 33342 staining.



**GTX70287 WB Image**

Detection of human p37 protein in HeLa whole cell lysate using GeneTex p37 polyclonal antiserum GTX70287.



For full product information, images and publications, please visit our [website](#).