

XRCC3 antibody

Cat. No. GTX70292

Host	Mouse
Clonality	Polyclonal
Isotype	IgG
Applications	WB
Reactivity	Human

Package

50 µl

Applications

Application Note

For WB: Use at a dilution of 1:500-1,000. Block with TBST/3% non-fat milk. Optimal working concentration for specific experiments needs to be determined by researcher.

Calculated MW	38 kDa. (Note)
Product Note	Human XRCC3

Properties

Form	Liquid
Buffer	Serum diluted with PBS
Preservative	No preservatives
Storage	Store as concentrated solution. Centrifuge briefly prior to opening vial. For short-term storage (1-2 weeks), store at 4°C. For long-term storage, aliquot and store at -20°C or below. Avoid multiple freeze-thaw cycles.
Immunogen	Recombinant human XRCC3 protein
Purification	Unpurified
Conjugation	Unconjugated

Note

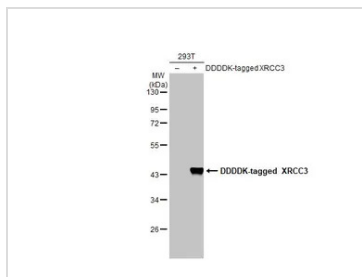
For laboratory research use only. Not for any clinical, therapeutic, or diagnostic use in humans or animals. Not for animal or human consumption.

Purchasers shall not, and agree not to enable third parties to, analyze, copy, reverse engineer or otherwise attempt to determine the structure or sequence of the product.



For full product information, images and publications, please visit our [website](#).

DATA IMAGES



GTX70292 WB Image

Non-transfected (–) and transfected (+) 293T whole cell extracts (30 µg) were separated by 10% SDS-PAGE, and the membrane was blotted with XRCC3 antibody (GTX70292) diluted at 1:5000. The HRP-conjugated anti-mouse IgG antibody (GTX213111-01) was used to detect the primary antibody.



For full product information, images and publications, please visit our [website](https://www.genetex.com).