

## XPC antibody [3.26]

**Cat. No. GTX70294**

<b>Host</b>	Mouse
<b>Clonality</b>	Monoclonal
<b>Isotype</b>	IgG1
<b>Applications</b>	WB, ICC/IF, IHC-P
<b>Reactivity</b>	Human, Mouse

References ( 20 )

Package

100 µl

## Applications

**Application Note**

\*Optimal dilutions/concentrations should be determined by the researcher.

Suggested dilution	Recommended dilution
WB	1:500-1:3000
ICC/IF	1:100-1:1000
IHC-P	Assay dependent

Not tested in other applications.

**Calculated MW** 106 kDa. ( [Note](#) )

## Properties

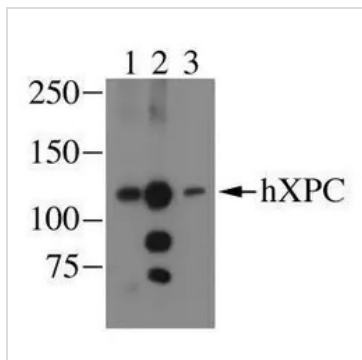
<b>Form</b>	Liquid
<b>Buffer</b>	PBS
<b>Preservative</b>	No preservative
<b>Storage</b>	Store as concentrated solution. Centrifuge briefly prior to opening vial. For short-term storage (1-2 weeks), store at 4°C. For long-term storage, aliquot and store at -20°C or below. Avoid multiple freeze-thaw cycles.
<b>Concentration</b>	1.15 mg/ml (Please refer to the vial label for the specific concentration.)
<b>Immunogen</b>	Recombinant XPC purified from E. coli
<b>Purification</b>	Protein G purified
<b>Conjugation</b>	Unconjugated

**Note**

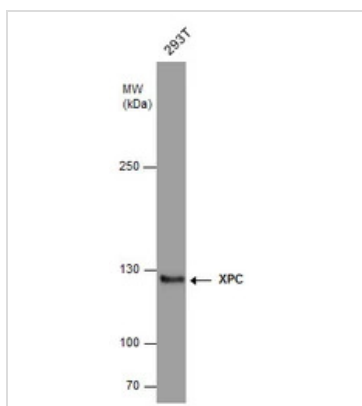
For laboratory research use only. Not for any clinical, therapeutic, or diagnostic use in humans or animals. Not for animal or human consumption.

Purchasers shall not, and agree not to enable third parties to, analyze, copy, reverse engineer or otherwise attempt to determine the structure or sequence of the product.

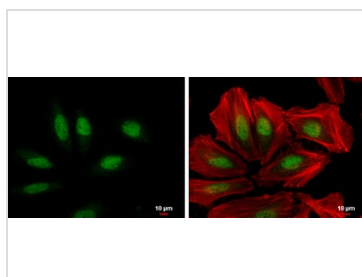
For full product information, images and publications, please visit our [website](#).

**DATA IMAGES**

**GTx70294 WB Image**

Western blot image of human XPC from HeLa whole cell lysate detected using rabbit polyclonal (lanes 1 and 2, catalog numbers GTx70308 and GTx70309, respectively) or monoclonal (lane 3, catalog number GTx70294) antibodies.


**GTx70294 WB Image**

XPC antibody [3.26] detects XPC protein by western blot analysis. Whole cell extracts (30 µg) was separated by 5% SDS-PAGE, and the membrane was blotted with XPC antibody [3.26] (GTx70294) diluted at 1:500. The HRP-conjugated anti-mouse IgG antibody (GTx213111-01) was used to detect the primary antibody.


**GTx70294 ICC/IF Image**

XPC antibody [3.26] detects XPC protein at nucleus by immunofluorescent analysis.

Sample: HeLa cells were fixed in 4% paraformaldehyde at RT for 15 min.

Green: XPC protein stained by XPC antibody [3.26] (GTx70294) diluted at 1:100.

Red: Phalloidin, a cytoskeleton marker, diluted at 1:200.

Scale bar = 10 µm.



For full product information, images and publications, please visit our [website](https://www.genetex.com).