

## DDB1 antibody [1322]

Cat. No. GTX70302

Host	Mouse
Clonality	Monoclonal
Isotype	IgG1
Applications	WB, ELISA
Reactivity	Human

Package  
100 µl

## Applications

## Application Note

For ELISA: Use at an assay dependent dilution. For WB(ECL): Use at a dilution of 1:1,000 in 5% Milk/PBS containing 0.05% Tween. We recommend an overnight incubation at 4°C. Secondary antibody (GTX30590) 2 hours at RT with dilution of 1:5,000 in 5% Milk/PBS containing 0.05% Tween. Not tested in other applications. Optimal dilutions/concentrations should be determined by the researcher.

Calculated MW 127 kDa. ( [Note](#) )

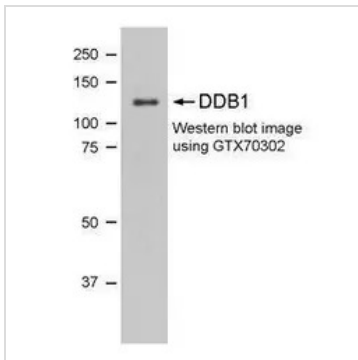
## Properties

Form	Liquid
Buffer	PBS
Preservative	No preservatives
Storage	Store as concentrated solution. Centrifuge briefly prior to opening vial. For short-term storage (1-2 weeks), store at 4°C. For long-term storage, aliquot and store at -20°C or below. Avoid multiple freeze-thaw cycles.
Concentration	3 mg/ml (Please refer to the vial label for the specific concentration.)
Immunogen	Synthetic peptide conjugated to protein carrier. The mice were immunized with a combination of N & C peptide. The Swiss Prot ID is Q16531.
Purification	Protein G purified
Conjugation	Unconjugated
Note	<p>For laboratory research use only. Not for any clinical, therapeutic, or diagnostic use in humans or animals. Not for animal or human consumption.</p> <p>Purchasers shall not, and agree not to enable third parties to, analyze, copy, reverse engineer or otherwise attempt to determine the structure or sequence of the product.</p>

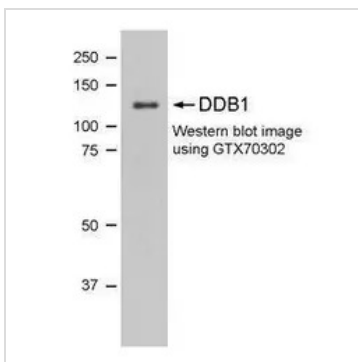


For full product information, images and publications, please visit our [website](#).

## DATA IMAGES



**GTX70302 WB Image**



**GTX70302 WB Image**

Western blot using GTX70302 - Detection of Human DDB1 protein by western blot experiment in T47D whole cell lysate by GTX70302.



For full product information, images and publications, please visit our [website](https://www.genetex.com).