

# Chk1 antibody [6F5]

**Cat. No. GTX70303**

<b>Host</b>	Mouse
<b>Clonality</b>	Monoclonal
<b>Isotype</b>	IgG1
<b>Applications</b>	WB, ICC/IF
<b>Reactivity</b>	Human

**Package**  
100 µl

## Applications

### Application Note

\*Optimal dilutions/concentrations should be determined by the researcher.

Suggested dilution	Recommended dilution
WB	Assay dependent
ICC/IF	Assay dependent

Not tested in other applications.

<b>Calculated MW</b>	54 kDa. ( <a href="#">Note</a> )
<b>Product Note</b>	Human Chk1

## Properties

<b>Form</b>	Liquid
<b>Buffer</b>	PBS, 20% Glycerol
<b>Preservative</b>	No preservatives
<b>Storage</b>	Store as concentrated solution. Centrifuge briefly prior to opening vial. For short-term storage (1-2 weeks), store at 4°C. For long-term storage, aliquot and store at -20°C or below. Avoid multiple freeze-thaw cycles.
<b>Concentration</b>	1 mg/ml (Please refer to the vial label for the specific concentration.)
<b>Immunogen</b>	Full-length human Chk1
<b>Purification</b>	Protein G affinity purified From hybridoma culture supernatant
<b>Conjugation</b>	Unconjugated

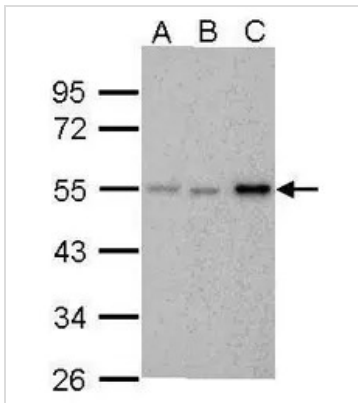
### Note

For laboratory research use only. Not for any clinical, therapeutic, or diagnostic use in humans or animals. Not for animal or human consumption.

Purchasers shall not, and agree not to enable third parties to, analyze, copy, reverse engineer or otherwise attempt to determine the structure or sequence of the product.



For full product information, images and publications, please visit our [website](#).

**DATA IMAGES**

**GTKX70303 WB Image**

Chk1 antibody [6F5] detects Chk1 protein by Western blot analysis.

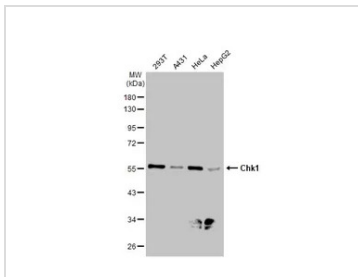
A. 30 µg 293T whole cell lysate/extract

B. 30 µg HeLa whole cell lysate/extract

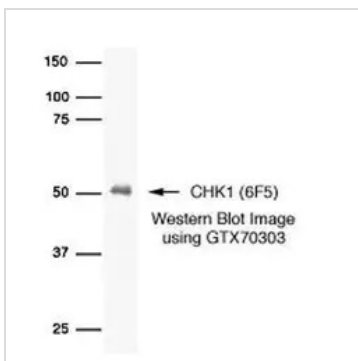
C. 30 µg A375 whole cell lysate/extract

10 % SDS-PAGE

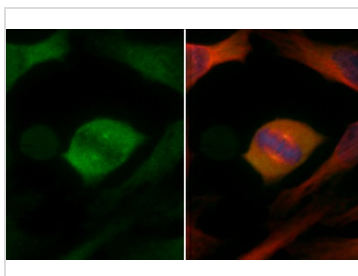
Chk1 antibody [6F5] (GTKX70303) dilution: 1:500


**GTKX70303 WB Image**

Various whole cell extracts (30 µg) were separated by 10% SDS-PAGE, and the membrane was blotted with Chk1 antibody [6F5] (GTKX70303) diluted at 1:500. The HRP-conjugated anti-rabbit IgG antibody (GTKX213110-01) was used to detect the primary antibody.


**GTKX70303 WB Image**

Detection of human Chk1 protein in HeLa whole cell lysate using GeneTex Chk 1 6F5 monoclonal antibody GTKX70303


**GTKX70303 ICC/IF Image**

Chk1 antibody [6F5] detects Chk1 protein at centrosome by immunofluorescent analysis.

Sample: HeLa cells were fixed in 4% paraformaldehyde at RT for 15 min.

Green: Chk1 stained by Chk1 antibody [6F5] (GTKX70303) diluted at 1:500.

Red: beta Tubulin, a cytoskeleton marker, stained by beta Tubulin antibody (GTKX101279) diluted at 1:1000.

Blue: Fluoroshield with DAPI (GTKX30920).



For full product information, images and publications, please visit our [website](https://www.genetex.com).