

TRF1 antibody [4E4]

Cat. No. GTX70304

Host	Mouse
Clonality	Monoclonal
Isotype	IgG1
Applications	WB, ICC/IF, IP, ChIP assay
Reactivity	Human

References (14)

Package

100 µl

Applications

Application Note

*Optimal dilutions/concentrations should be determined by the researcher.

Suggested dilution	Recommended dilution
WB	Assay dependent
ICC/IF	1:100-1:1000
IP	Assay dependent
ChIP assay	Assay dependent

Not tested in other applications.

Properties

Form	Liquid
Buffer	PBS
Preservative	No preservatives
Storage	Store as concentrated solution. Centrifuge briefly prior to opening vial. For short-term storage (1-2 weeks), store at 4°C. For long-term storage, aliquot and store at -20°C or below. Avoid multiple freeze-thaw cycles.
Concentration	1 mg/ml (Please refer to the vial label for the specific concentration.)
Purification	Protein G purified
Conjugation	Unconjugated

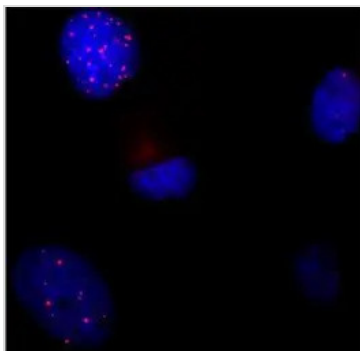
Note

For laboratory research use only. Not for any clinical, therapeutic, or diagnostic use in humans or animals. Not for animal or human consumption.

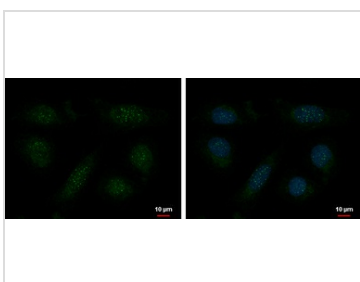
Purchasers shall not, and agree not to enable third parties to, analyze, copy, reverse engineer or otherwise attempt to determine the structure or sequence of the product.

For full product information, images and publications, please visit our [website](#).

DATA IMAGES

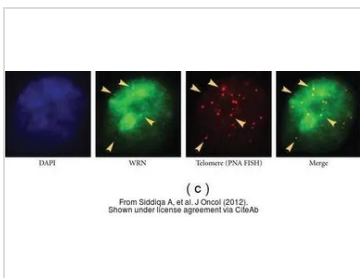


GTX70304 ICC/IF Image



GTX70304 ICC/IF Image

TRF1 antibody [4E4] detects TRF1 protein at telomere by immunofluorescent analysis.
 Sample: U2OS cells were fixed in 4% paraformaldehyde at RT for 15 min.
 Green: TRF1 protein stained by TRF1 antibody [4E4] (GTX70304) diluted at 1:500.
 Blue: Hoechst 33342 staining.



GTX70304 ICC/IF Image

The data was published in the journal J Oncol in 2012. [PMID: 22545052](https://pubmed.ncbi.nlm.nih.gov/22545052/)



For full product information, images and publications, please visit our [website](#).