

# TRF1 antibody [4E4]

**Cat. No. GTX70304**

<b>Host</b>	Mouse
<b>Clonality</b>	Monoclonal
<b>Isotype</b>	IgG1
<b>Applications</b>	ICC/IF
<b>Reactivity</b>	Human

References ( 11 )

Package

100 µl

## Applications

### Application Note

\*Optimal dilutions/concentrations should be determined by the researcher.

Suggested dilution	Recommended dilution
ICC/IF	1:100-1:1000

Not tested in other applications.

## Properties

<b>Form</b>	Liquid
<b>Buffer</b>	PBS
<b>Preservative</b>	No Preservative
<b>Storage</b>	Store as concentrated solution. Centrifuge briefly prior to opening vial. For short-term storage (1-2 weeks), store at 4°C. For long-term storage, aliquot and store at -20°C or below. Avoid multiple freeze-thaw cycles.
<b>Concentration</b>	1 mg/ml (Please refer to the vial label for the specific concentration.)
<b>Purification</b>	Protein G purified
<b>Conjugation</b>	Unconjugated

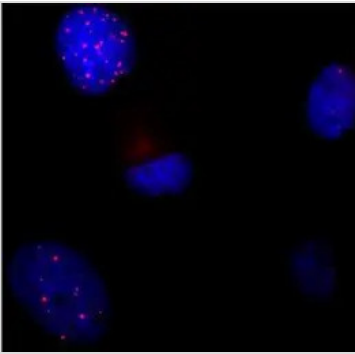
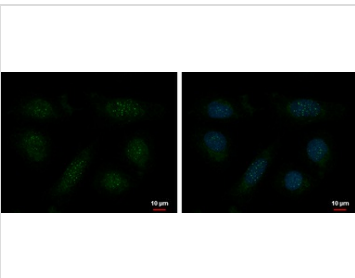
### Note

For laboratory research use only. Not for any clinical, therapeutic, or diagnostic use in humans or animals. Not for animal or human consumption.

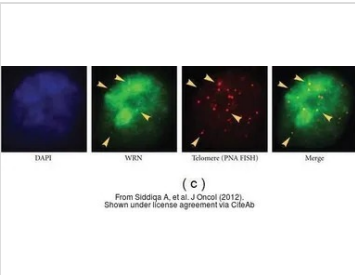
Purchasers shall not, and agree not to enable third parties to, analyze, copy, reverse engineer or otherwise attempt to determine the structure or sequence of the product.



For full product information, images and publications, please visit our [website](#).

**DATA IMAGES**

**GTx70304 ICC/IF Image**

**GTx70304 ICC/IF Image**

TRF1 antibody [4E4] detects TRF1 protein at telomere by immunofluorescent analysis.  
 Sample: U2OS cells were fixed in 4% paraformaldehyde at RT for 15 min.  
 Green: TRF1 protein stained by TRF1 antibody [4E4] (GTx70304) diluted at 1:500.  
 Blue: Hoechst 33342 staining.


**GTx70304 ICC/IF Image**

The data was published in the journal J Oncol in 2012. [PMID: 22545052](https://pubmed.ncbi.nlm.nih.gov/22545052/)



For full product information, images and publications, please visit our [website](https://www.genetex.com).