

XPC antibody

Cat. No. GTX70308

Host	Rabbit
Clonality	Polyclonal
Isotype	IgG
Applications	WB
Reactivity	Human

References (1)

Package

100 µl

Applications

Application Note

For WB: Load 40ug cell lysate/lane. Use at a dilution of 1:500-1:1000. Optimal dilutions/concentrations should be determined by the researcher.

Calculated MW	106 kDa. (Note)
Product Note	Human XPC

Properties

Form	Liquid
Buffer	PBS
Preservative	No Preservative
Storage	Store as concentrated solution. Centrifuge briefly prior to opening vial. For short-term storage (1-2 weeks), store at 4°C. For long-term storage, aliquot and store at -20°C or below. Avoid multiple freeze-thaw cycles.
Concentration	0.5 mg/ml (Please refer to the vial label for the specific concentration.)
Immunogen	Peptide conjugated to a carrier protein
Purification	Affinity purified with antigen
Conjugation	Unconjugated

Note

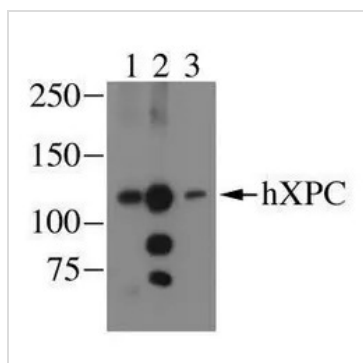
For laboratory research use only. Not for any clinical, therapeutic, or diagnostic use in humans or animals. Not for animal or human consumption.

Purchasers shall not, and agree not to enable third parties to, analyze, copy, reverse engineer or otherwise attempt to determine the structure or sequence of the product.



For full product information, images and publications, please visit our [website](#).

DATA IMAGES



GTX70308 WB Image

Western blot image of human XPC from HeLa whole cell lysate (40ug/lane) detected using rabbit polyclonal (lanes 1 and 2, catalog numbers GTX70308 (1:500) and GTX70309, respectively) or monoclonal (lane 3, catalog number GTX70294) antibodies.



For full product information, images and publications, please visit our [website](https://www.genetex.com).