

## XPC antibody

**Cat. No. GTX70308**

<b>Host</b>	Rabbit
<b>Clonality</b>	Polyclonal
<b>Isotype</b>	IgG
<b>Applications</b>	WB
<b>Reactivity</b>	Human

References ( 1 )

Package

100 µl

### Applications

#### Application Note

For WB: Load 40ug cell lysate/lane. Use at a dilution of 1:500-1:1000. Optimal dilutions/concentrations should be determined by the researcher.

<b>Calculated MW</b>	106 kDa. ( <a href="#">Note</a> )
<b>Product Note</b>	Human XPC

### Properties

<b>Form</b>	Liquid
<b>Buffer</b>	PBS
<b>Preservative</b>	No Preservative
<b>Storage</b>	Store as concentrated solution. Centrifuge briefly prior to opening vial. For short-term storage (1-2 weeks), store at 4°C. For long-term storage, aliquot and store at -20°C or below. Avoid multiple freeze-thaw cycles.
<b>Concentration</b>	0.5 mg/ml (Please refer to the vial label for the specific concentration.)
<b>Immunogen</b>	Peptide conjugated to a carrier protein
<b>Purification</b>	Affinity purified with antigen
<b>Conjugation</b>	Unconjugated

#### Note

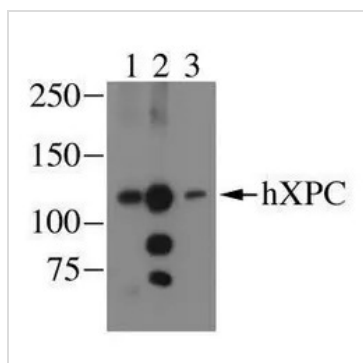
For laboratory research use only. Not for any clinical, therapeutic, or diagnostic use in humans or animals. Not for animal or human consumption.

Purchasers shall not, and agree not to enable third parties to, analyze, copy, reverse engineer or otherwise attempt to determine the structure or sequence of the product.



For full product information, images and publications, please visit our [website](#).

## DATA IMAGES



### GTx70308 WB Image

Western blot image of human XPC from HeLa whole cell lysate (40ug/lane) detected using rabbit polyclonal (lanes 1 and 2, catalog numbers GTx70308 (1:500) and GTx70309, respectively) or monoclonal (lane 3, catalog number GTx70294) antibodies.



For full product information, images and publications, please visit our [website](https://www.genetex.com).