

53BP1 antibody

Cat. No. GTX70310

Host	Rabbit
Clonality	Polyclonal
Isotype	IgG
Application	WB, ICC/IF, IHC-P, IHC
Reactivity	Human, Mouse

Reference (1)

★★★★☆ Review (1)

Package

100 µl

APPLICATION

Application Note

Suggested starting dilutions are as follows: WB: 1:500-1:3000, ICC/IF: 1:100-1:1000. Not yet tested in other applications. Optimal working dilutions should be determined experimentally by the end user.

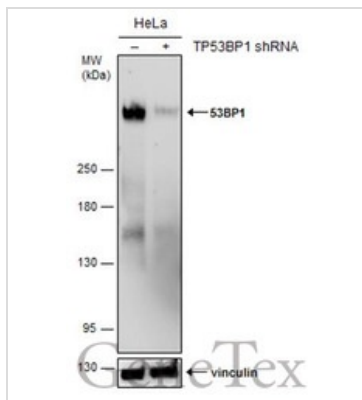
Calculated MW 214 kDa. ([Note](#))

PROPERTIES

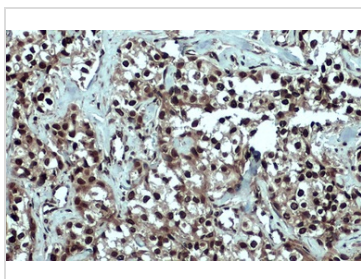
Form	Liquid
Buffer	PBS
Preservative	No preservative
Storage	Store as concentrated solution. Centrifuge briefly prior to opening vial. For short-term storage (1-2 weeks), store at 4°C. For long-term storage, aliquot and store at -20°C or below. Avoid multiple freeze-thaw cycles.
Concentration	1.84 mg/ml (Please refer to the vial label for the specific concentration.)
Immunogen	Synthetic peptide corresponding to the carboxy-terminus of h53BP1, conjugated to a carrier protein.
Purification	Purified by antigen-affinity chromatography.
Conjugation	Unconjugated
Note	For laboratory research use only. Not for any clinical, therapeutic, or diagnostic use in humans or animals. Not for animal or human consumption. Purchasers shall not, and agree not to enable third parties to, analyze, copy, reverse engineer or otherwise attempt to determine the structure or sequence of the product.



For full product information, images and publications, please visit our [website](#).

DATA IMAGES

GTX70310 WB Image

Non-transfected (–) and transfected (+) HeLa whole cell extracts (50 µg) were separated by 5% SDS-PAGE, and the membrane was blotted with 53BP1 antibody (GTX70310) diluted at 1:500. The HRP-conjugated anti-rabbit IgG antibody (GTX213110-01) was used to detect the primary antibody.

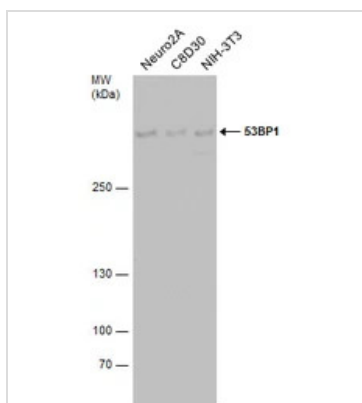

GTX70310 IHC-P Image

53BP1 antibody detects 53BP1 protein at nucleus by immunohistochemical analysis.

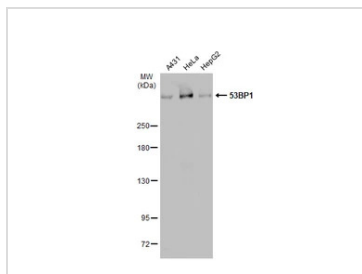
Sample: Paraffin-embedded human breast carcinoma.

53BP1 stained by 53BP1 antibody (GTX70310) diluted at 1:1000.

Antigen Retrieval: Citrate buffer, pH 6.0, 15 min


GTX70310 WB Image

Various whole cell extracts (30 µg) were separated by 5% SDS-PAGE, and the membrane was blotted with 53BP1 antibody (GTX70310) diluted at 1:500. The HRP-conjugated anti-rabbit IgG antibody (GTX213110-01) was used to detect the primary antibody.


GTX70310 WB Image

Various whole cell extracts (30 µg) were separated by 5% SDS-PAGE, and the membrane was blotted with 53BP1 antibody (GTX70310) diluted at 1:2000. The HRP-conjugated anti-rabbit IgG antibody (GTX213110-01) was used to detect the primary antibody.



For full product information, images and publications, please visit our [website](https://www.genetex.com).