

XPB antibody

Cat. No. GTX70311

Host	Rabbit
Clonality	Polyclonal
Isotype	IgG
Applications	WB, ICC/IF
Reactivity	Human

Package

50 µg

Applications

Application Note

For WB: Use at a dilution of 1:500 and incubate at RT for 40 minutes. Blocking solution: 3% Milk/TBST at RT for one hour. Optimal dilutions/concentrations should be determined by the researcher.

Calculated MW	89 kDa. (Note)
Product Note	Human XPB

Properties

Form	Liquid
Buffer	PBS
Preservative	No preservatives
Storage	Store as concentrated solution. Centrifuge briefly prior to opening vial. For short-term storage (1-2 weeks), store at 4°C. For long-term storage, aliquot and store at -20°C or below. Avoid multiple freeze-thaw cycles.
Concentration	1 mg/ml (Please refer to the vial label for the specific concentration.)
Immunogen	Peptide corresponding to the carboxy-terminus of human XPB.
Purification	Affinity purified with antigen From polyclonal serum
Conjugation	Unconjugated

Note

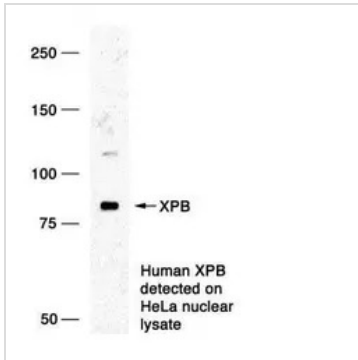
For laboratory research use only. Not for any clinical, therapeutic, or diagnostic use in humans or animals. Not for animal or human consumption.

Purchasers shall not, and agree not to enable third parties to, analyze, copy, reverse engineer or otherwise attempt to determine the structure or sequence of the product.

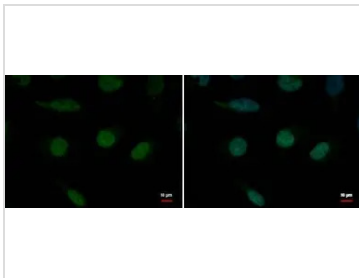


For full product information, images and publications, please visit our [website](#).

DATA IMAGES



GTx70311 WB Image



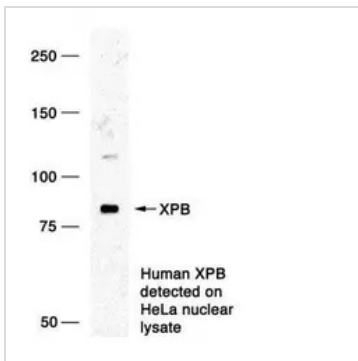
GTx70311 ICC/IF Image

XPB antibody detects XPB protein at nucleus by immunofluorescent analysis.

Sample: HeLa cells were fixed in 4% paraformaldehyde at RT for 15 min.

Green: XPB protein stained by XPB antibody (GTx70311) diluted at 1:1000.

Blue: Hoechst 33342 staining.



GTx70311 WB Image



For full product information, images and publications, please visit our [website](#).