

## 53BP1 antibody

Cat. No. GTX70316

Host	Rabbit
Clonality	Polyclonal
Isotype	IgG
Applications	WB
Reactivity	Human

★★★★★ Review ( 1 )

Package  
50 µl

## Applications

## Application Note

For WB: Use at a dilution of 1:500. Optimal dilutions/concentrations should be determined by the researcher.

Calculated MW 214 kDa. ( [Note](#) )

## Properties

Form	Liquid
Buffer	PBS
Preservative	No preservatives
Storage	Store as concentrated solution. Centrifuge briefly prior to opening vial. For short-term storage (1-2 weeks), store at 4°C. For long-term storage, aliquot and store at -20°C or below. Avoid multiple freeze-thaw cycles.
Concentration	0.5 mg/ml (Please refer to the vial label for the specific concentration.)
Immunogen	Synthetic peptide corresponding to the amino-terminus of h53BP1, conjugated to a carrier protein.
Purification	Affinity purified with antigen From polyclonal serum
Conjugation	Unconjugated

## Note

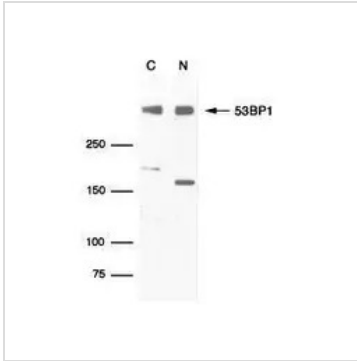
For laboratory research use only. Not for any clinical, therapeutic, or diagnostic use in humans or animals. Not for animal or human consumption.

Purchasers shall not, and agree not to enable third parties to, analyze, copy, reverse engineer or otherwise attempt to determine the structure or sequence of the product.



For full product information, images and publications, please visit our [website](#).

## DATA IMAGES



**GTX70316 WB Image**



For full product information, images and publications, please visit our [website](#).