

Hepatitis C virus antibody

Cat. No. GTX70331

Host	Rabbit
Clonality	Polyclonal
Isotype	IgG
Applications	WB, IHC
Reactivity	Hepatitis C virus

Package
100 µg

Applications

Application Note

For WB: Use at a dilution of 1:500-1:1,000. Optimal dilutions/concentrations should be determined by the researcher.

Product Note Residues 33-43 [CGVYLLPRRGPR] of HCV core, env, and part of E2/NS1 of HCV.

Properties

Form	Liquid
Buffer	PBS
Preservative	0.02% Sodium azide
Storage	Store as concentrated solution. Centrifuge briefly prior to opening vial. For short-term storage (1-2 weeks), store at 4°C. For long-term storage, aliquot and store at -20°C or below. Avoid multiple freeze-thaw cycles.
Concentration	1 mg/ml (Please refer to the vial label for the specific concentration.)
Immunogen	Peptide - amino acids 33-43 of Hepatitis C Virus (HCV) core protein C3.
Purification	Affinity purified IgG
Conjugation	Unconjugated

Note

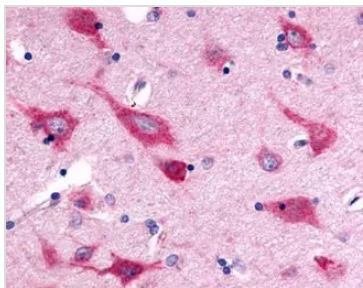
For laboratory research use only. Not for any clinical, therapeutic, or diagnostic use in humans or animals. Not for animal or human consumption.

Purchasers shall not, and agree not to enable third parties to, analyze, copy, reverse engineer or otherwise attempt to determine the structure or sequence of the product.



For full product information, images and publications, please visit our [website](#).

DATA IMAGES



GTX70331 IHC Image



For full product information, images and publications, please visit our [website](#).