

## Rad17 antibody

**Cat. No. GTX70346**

<b>Host</b>	Rabbit
<b>Clonality</b>	Polyclonal
<b>Isotype</b>	IgG
<b>Applications</b>	WB, ELISA
<b>Reactivity</b>	Schizosaccharomyces pombe

**Package**  
100 µg

## Applications

**Application Note**

Western blot - Use at 1:500 to 1:1,000 dilution. However, the investigator should determine the optimal dilution for a specific application such as immunohistochemistry.

**Calculated MW** 77 kDa. ([Note](#))**Product Note** Reacts with residues 10-23 [STKRSLKKKKIRKI] of the S. pombe RAD17 75 kDa protein.

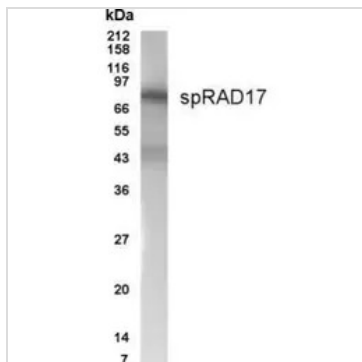
## Properties

**Form** Liquid**Buffer** PBS**Preservative** 0.02% Sodium azide**Storage** Store as concentrated solution. Centrifuge briefly prior to opening vial. For short-term storage (1-2 weeks), store at 4°C. For long-term storage, aliquot and store at -20°C or below. Avoid multiple freeze-thaw cycles.**Concentration** 1 mg/ml (Please refer to the vial label for the specific concentration.)**Purification** Affinity purified IgG.**Conjugation** Unconjugated**Note** For laboratory research use only. Not for any clinical, therapeutic, or diagnostic use in humans or animals. Not for animal or human consumption.

Purchasers shall not, and agree not to enable third parties to, analyze, copy, reverse engineer or otherwise attempt to determine the structure or sequence of the product.

For full product information, images and publications, please visit our [website](#).

## DATA IMAGES



GTX70346 WB Image



For full product information, images and publications, please visit our [website](#).