

PTCH1 antibody

Cat. No. GTX70349

Host	Rabbit
Clonality	Polyclonal
Isotype	IgG
Applications	WB
Reactivity	Mouse

Package
100 µg

Applications

Application Note

For WB: Use at a dilution of 1:500-1:1,000. Optimal dilutions/concentrations should be determined by the researcher.

Properties

Form	Liquid
Buffer	PBS
Preservative	0.02% Sodium azide
Storage	Store as concentrated solution. Centrifuge briefly prior to opening vial. For short-term storage (1-2 weeks), store at 4°C. For long-term storage, aliquot and store at -20°C or below. Avoid multiple freeze-thaw cycles.
Concentration	1 mg/ml (Please refer to the vial label for the specific concentration.)
Immunogen	Synthetic peptide-amino acids 269-279 of Mouse PTCH1.
Purification	Affinity purified with antigen
Conjugation	Unconjugated

Note

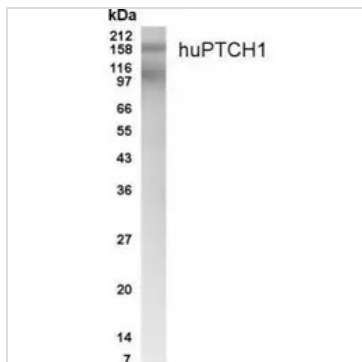
For laboratory research use only. Not for any clinical, therapeutic, or diagnostic use in humans or animals. Not for animal or human consumption.

Purchasers shall not, and agree not to enable third parties to, analyze, copy, reverse engineer or otherwise attempt to determine the structure or sequence of the product.



For full product information, images and publications, please visit our [website](#).

DATA IMAGES



GTX70349 WB Image

Western blot analysis of human PTCH1 in fetal brain lysate at a 1:500 dilution.



For full product information, images and publications, please visit our [website](https://www.genetex.com).