

IKK gamma antibody

Cat. No. GTX70362

Host	Rabbit
Clonality	Polyclonal
Isotype	IgG
Applications	WB, ELISA
Reactivity	Human

Package
100 µg

Applications

Application Note

Western blot - Use at 1:500 to 1:1,000 dilution. However, the investigator should determine the optimal dilution for a specific application such as immunohistochemistry.

Product Note Reacts with the residues 2-13 [NRHLWKSQCEM] of the IKK-g protein. Recognizes both human isoforms.

Properties

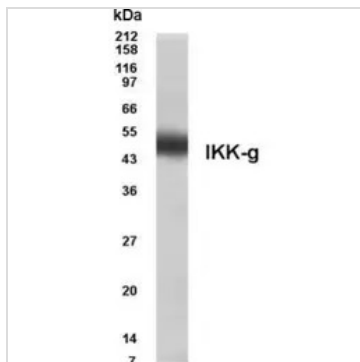
Form	Liquid
Buffer	PBS
Preservative	0.02% Sodium azide
Storage	Store as concentrated solution. Centrifuge briefly prior to opening vial. For short-term storage (1-2 weeks), store at 4°C. For long-term storage, aliquot and store at -20°C or below. Avoid multiple freeze-thaw cycles.
Concentration	1 mg/ml (Please refer to the vial label for the specific concentration.)
Purification	Affinity purified IgG
Conjugation	Unconjugated

Note For laboratory research use only. Not for any clinical, therapeutic, or diagnostic use in humans or animals. Not for animal or human consumption.

Purchasers shall not, and agree not to enable third parties to, analyze, copy, reverse engineer or otherwise attempt to determine the structure or sequence of the product.



For full product information, images and publications, please visit our [website](#).

DATA IMAGES

GTX70362 WB Image

Western blot analysis of IKK-g in Interlukin-1-stimulated 293 cells.



For full product information, images and publications, please visit our [website](https://www.genetex.com).