

## FLASH antibody

Cat. No. GTX70368

Host	Rabbit
Clonality	Polyclonal
Isotype	IgG
Applications	WB
Reactivity	Human, Mouse

**Package**  
100 µg

## Applications

## Application Note

For WB: Use at a dilution of 1:500-1:1,000. Optimal dilutions/concentrations should be determined by the researcher.

Calculated MW	223 kDa. ( <a href="#">Note</a> )
Product Note	C terminus of the FLASH protein.

## Properties

Form	Liquid
Buffer	PBS
Preservative	0.02% Sodium azide
Storage	Store as concentrated solution. Centrifuge briefly prior to opening vial. For short-term storage (1-2 weeks), store at 4°C. For long-term storage, aliquot and store at -20°C or below. Avoid multiple freeze-thaw cycles.
Concentration	1 mg/ml (Please refer to the vial label for the specific concentration.)
Immunogen	C-terminus of the FLASH protein. Immunogen sequence information is commercially sensitive.
Purification	Affinity purified IgG
Conjugation	Unconjugated

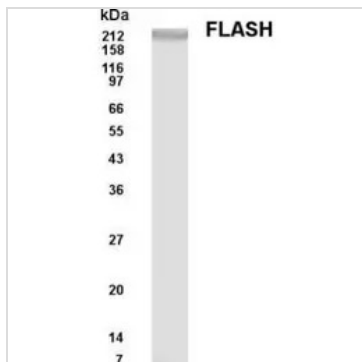
## Note

For laboratory research use only. Not for any clinical, therapeutic, or diagnostic use in humans or animals. Not for animal or human consumption.

Purchasers shall not, and agree not to enable third parties to, analyze, copy, reverse engineer or otherwise attempt to determine the structure or sequence of the product.



For full product information, images and publications, please visit our [website](#).

**DATA IMAGES**

**GTX70368 WB Image**

Western blot analysis of FLASH in NIH3T3 cell lysate.



For full product information, images and publications, please visit our [website](#).