

# SHANK1a antibody

**Cat. No. GTX70380**

<b>Host</b>	Rabbit
<b>Clonality</b>	Polyclonal
<b>Isotype</b>	IgG
<b>Applications</b>	WB, IHC
<b>Reactivity</b>	Human, Rat

**Package**  
100 µg

## Applications

### Application Note

WB: Use at a dilution of 1:500 - 1:1,000. Optimal dilutions/concentrations should be determined by the researcher.

**Calculated MW** 225 kDa. ([Note](#))

## Properties

<b>Form</b>	Liquid
<b>Buffer</b>	PBS
<b>Preservative</b>	0.02% Sodium azide
<b>Storage</b>	Store as concentrated solution. Centrifuge briefly prior to opening vial. For short-term storage (1-2 weeks), store at 4°C. For long-term storage, aliquot and store at -20°C or below. Avoid multiple freeze-thaw cycles.
<b>Concentration</b>	1 mg/ml (Please refer to the vial label for the specific concentration.)
<b>Immunogen</b>	Amino acids - SGPIYPGLFDIRSS of the C terminus of the Shank1a protein.
<b>Purification</b>	Affinity purified IgG
<b>Conjugation</b>	Unconjugated

### Note

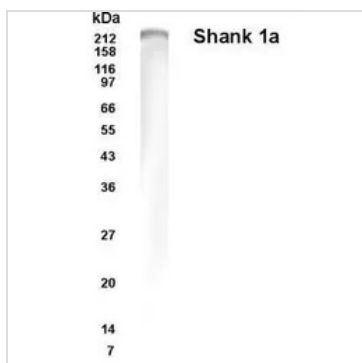
For laboratory research use only. Not for any clinical, therapeutic, or diagnostic use in humans or animals. Not for animal or human consumption.

Purchasers shall not, and agree not to enable third parties to, analyze, copy, reverse engineer or otherwise attempt to determine the structure or sequence of the product.



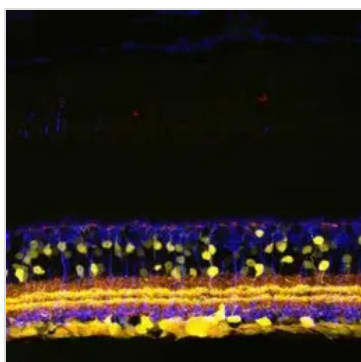
For full product information, images and publications, please visit our [website](#).

## DATA IMAGES



### GTx70380 WB Image

Western blot analysis of Shank1a in rat brain lysate.



### GTx70380 IHC Image

IHC staining in mouse retina.



For full product information, images and publications, please visit our [website](#).