

## Survivin antibody

Cat. No. GTX70459

Host	Rabbit
Clonality	Polyclonal
Isotype	IgG
Applications	WB, ELISA, IHC
Reactivity	Human, Mouse, Rat

Package  
100 µg

## Applications

## Application Note

Western blot - Use at 1:500 to 1:1,000 dilution. However, the investigator should determine the optimal dilution for a specific application such as immunohistochemistry.

Calculated MW 16 kDa. ( [Note](#) )

Product Note Reacts with residues 125-142 EETAKKVRRAIEQLAAMD of the human Survivin protein.

## Properties

Form	Liquid
Buffer	PBS
Preservative	0.02% Sodium azide
Storage	Store as concentrated solution. Centrifuge briefly prior to opening vial. For short-term storage (1-2 weeks), store at 4°C. For long-term storage, aliquot and store at -20°C or below. Avoid multiple freeze-thaw cycles.
Concentration	1 mg/ml (Please refer to the vial label for the specific concentration.)
Immunogen	Reacts with residues 125-142 EETAKKVRRAIEQLAAMD of the human Survivin protein.
Purification	Affinity purified IgG
Conjugation	Unconjugated

## Note

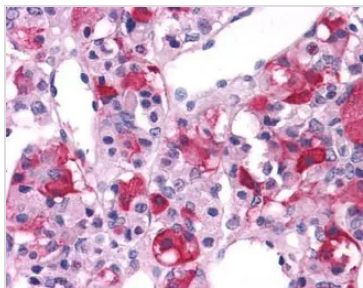
For laboratory research use only. Not for any clinical, therapeutic, or diagnostic use in humans or animals. Not for animal or human consumption.

Purchasers shall not, and agree not to enable third parties to, analyze, copy, reverse engineer or otherwise attempt to determine the structure or sequence of the product.



For full product information, images and publications, please visit our [website](#).

DATA IMAGES



GTX70459 IHC Image



For full product information, images and publications, please visit our [website](#).