

Ku80 antibody

Cat. No. GTX70485

Host	Rabbit
Clonality	Polyclonal
Isotype	IgG
Applications	WB, ELISA
Reactivity	Human, Mouse

References (6)

Package

100 µg

Applications

Application Note

Western blot - Use at 1:500 dilution. However, the investigator should determine the optimal dilution for a specific application such as immunohistochemistry.

Product Note Reacts with residues 323-338 [FSKVDEEQMKYKSEGK] of the 80 kDa Ku80 protein. Sequence is 100% conserved between human, mouse rat and hamster.

Properties

Form	Liquid
Buffer	PBS
Preservative	0.02% Sodium azide
Storage	Store as concentrated solution. Centrifuge briefly prior to opening vial. For short-term storage (1-2 weeks), store at 4°C. For long-term storage, aliquot and store at -20°C or below. Avoid multiple freeze-thaw cycles.
Concentration	1 mg/ml (Please refer to the vial label for the specific concentration.)
Purification	Affinity purified IgG
Conjugation	Unconjugated

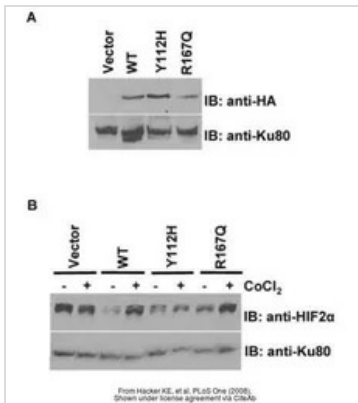
Note For laboratory research use only. Not for any clinical, therapeutic, or diagnostic use in humans or animals. Not for animal or human consumption.

Purchasers shall not, and agree not to enable third parties to, analyze, copy, reverse engineer or otherwise attempt to determine the structure or sequence of the product.



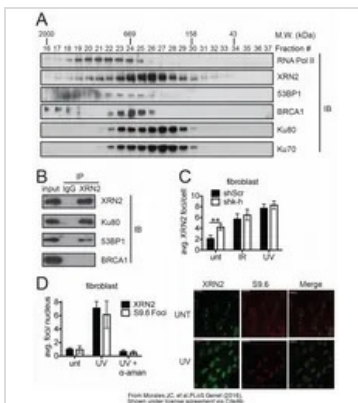
For full product information, images and publications, please visit our [website](#).

DATA IMAGES



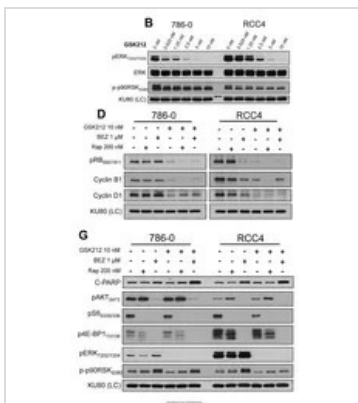
GTX70485 WB Image

The data was published in the journal PLoS One in 2008. [PMID: 19030229](https://pubmed.ncbi.nlm.nih.gov/19030229/)



GTX70485 WB Image

The data was published in the journal PLoS Genet in 2016. [PMID: 27437695](https://pubmed.ncbi.nlm.nih.gov/27437695/)



GTX70485 WB Image

The data was published in the journal PLoS One in 2014. [PMID: 25180793](https://pubmed.ncbi.nlm.nih.gov/25180793/)



For full product information, images and publications, please visit our [website](https://www.genetex.com).