

# GLUT10 antibody

**Cat. No. GTX70487**

<b>Host</b>	Rabbit
<b>Clonality</b>	Polyclonal
<b>Isotype</b>	IgG
<b>Applications</b>	WB, IHC-Fr
<b>Reactivity</b>	Human, Mouse, Rat

**Package**  
100 µg

## Applications

### Application Note

Western blot - Use at 1:500 to 1:1,000 dilution. However, the investigator should determine the optimal dilution for a specific application such as immunohistochemistry.

**Product Note** Residues with residues 367-385 (ILSTAKKTKPHPRSGDPSA) of the human GLUT10 protein.

## Properties

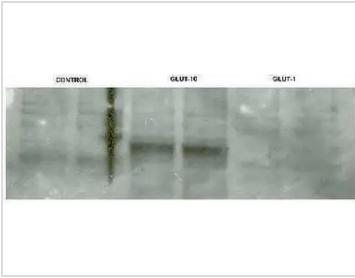
<b>Form</b>	Liquid
<b>Buffer</b>	PBS
<b>Preservative</b>	0.02% Sodium azide
<b>Storage</b>	Store as concentrated solution. Centrifuge briefly prior to opening vial. For short-term storage (1-2 weeks), store at 4°C. For long-term storage, aliquot and store at -20°C or below. Avoid multiple freeze-thaw cycles.
<b>Concentration</b>	1 mg/ml (Please refer to the vial label for the specific concentration.)
<b>Purification</b>	Affinity purified IgG
<b>Conjugation</b>	Unconjugated

**Note** For laboratory research use only. Not for any clinical, therapeutic, or diagnostic use in humans or animals. Not for animal or human consumption.

Purchasers shall not, and agree not to enable third parties to, analyze, copy, reverse engineer or otherwise attempt to determine the structure or sequence of the product.



For full product information, images and publications, please visit our [website](#).

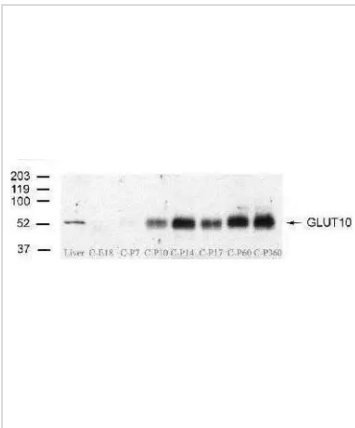
**DATA IMAGES**

**GTx70487 WB Image**

WB analysis of transfected NCI-H1299 cell lysates using GTx70487 GLUT10 antibody.

Lane 1 and 2 : Mock

Lane 3 and 4 : GLUT10-transfected lysates

Lane 5 and 6 : GLUT1-transfected lysates


**GTx70487 WB Image**

WB analysis of various samples using GTx70487 GLUT10 antibody.

Lane 1 : Mouse liver

Lane 2 : Mouse embryo E18 cochlea

Lane 3 : P7 mouse cochlea

Lane 4 : P10 mouse cochlea

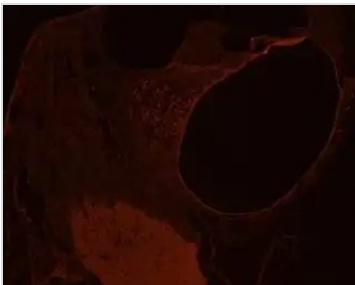
Lane 5 : P14 mouse cochlea

Lane 6 : P17 mouse cochlea

Lane 7 : P60 mouse cochlea

Lane 8 : One-year mouse cochlea

Loading : 10 µg


**GTx70487 IHC-Fr Image**

IHC-Fr analysis of mouse inner ear tissue using GTx70487 GLUT10 antibody.

Dilution : 1:200



For full product information, images and publications, please visit our [website](https://www.genetex.com).