

## Tet Repressor antibody

Cat. No. GTX70489

Host	Rabbit
Clonality	Polyclonal
Isotype	IgG
Applications	WB, ELISA
Reactivity	Species independent

References ( 1 )

Package

100 µl

## Applications

## Application Note

\*Optimal dilutions/concentrations should be determined by the researcher.

Suggested dilution	Recommended dilution
WB	1:5000-1:10000
ELISA	1:1000-1:10000

Not tested in other applications.

**Product Note** The antibody works in any species where the TetR system is being used to regulate gene expression in mammalian cells.

## Properties

Form	Liquid
Buffer	PBS, 20% Glycerol
Preservative	0.025% ProClin 300
Storage	Store as concentrated solution. Centrifuge briefly prior to opening vial. For short-term storage (1-2 weeks), store at 4°C. For long-term storage, aliquot and store at -20°C or below. Avoid multiple freeze-thaw cycles.
Concentration	1.18 mg/ml (Please refer to the vial label for the specific concentration.)
Immunogen	Reacts with residues 31-49 [AQKLGVEQPTLYWHVKNKR] of the 22 kDa Tet repressor protein. Sequence is 100% conserved in all TetR classes.
Purification	Purified by antigen-affinity chromatography.
Conjugation	Unconjugated

## Note

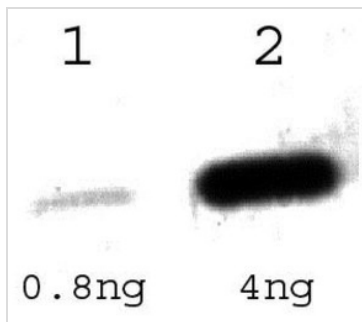
For laboratory research use only. Not for any clinical, therapeutic, or diagnostic use in humans or animals. Not for animal or human consumption.

Purchasers shall not, and agree not to enable third parties to, analyze, copy, reverse engineer or otherwise attempt to determine the structure or sequence of the product.



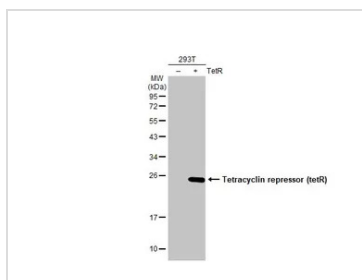
For full product information, images and publications, please visit our [website](#).

## DATA IMAGES



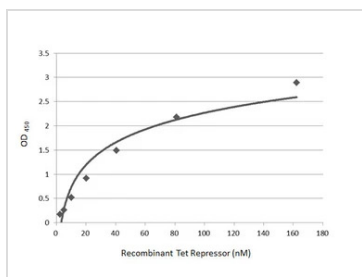
### GTx70489 WB Image

Detection of Tet- Repressor (TetR) using anti-TetR (GTx70489) at a 1:1000 dilution.  
The HRP-conjugated anti-rabbit IgG antibody (GTx213110-01) was used to detect the primary antibody.



### GTx70489 WB Image

Non-transfected (–) and transfected (+) 293T whole cell extracts (30 µg) were separated by 12% SDS-PAGE, and the membrane was blotted with Tetracyclin repressor (tetR) antibody (GTx131984) diluted at 1:10000. The HRP-conjugated anti-rabbit IgG antibody (GTx213110-01) was used to detect the primary antibody.



### GTx70489 ELISA Image

Indirect ELISA analysis performed by coating plate with recombinant Tet Repressor protein (162.21-2.53 nM). Coated protein was probed with Tet Repressor antibody (GTx70489) (1 µg/mL). Goat anti-rabbit IgG antibody (HRP) (GTx213110-01) (1:10000) was used to detect bound primary antibody.



For full product information, images and publications, please visit our [website](https://www.genetex.com).