

# CXCR4 antibody

**Cat. No. GTX70531**

<b>Host</b>	Rabbit
<b>Clonality</b>	Polyclonal
<b>Isotype</b>	IgG
<b>Applications</b>	IHC-P
<b>Reactivity</b>	Human, Mouse, Rat, Rabbit, Hamster, Chicken, Monkey

**Package**

25 µg

## Applications

### Application Note

\*Optimal dilutions/concentrations should be determined by the researcher.

Suggested dilution	Recommended dilution
IHC-P	9 - 14 µg/ml

Not tested in other applications.

## Properties

<b>Form</b>	Liquid
<b>Buffer</b>	PBS
<b>Preservative</b>	0.1% Sodium azide
<b>Storage</b>	Store as concentrated solution. Centrifuge briefly prior to opening vial. For short-term storage (1-2 weeks), store at 4°C. For long-term storage, aliquot and store at -20°C or below. Avoid multiple freeze-thaw cycles.
<b>Concentration</b>	1 mg/ml (Please refer to the vial label for the specific concentration.)
<b>Immunogen</b>	Synthetic 20 amino acid peptide from 3rd cytoplasmic domain of human CXCR4.
<b>Purification</b>	Purified by affinity chromatography
<b>Conjugation</b>	Unconjugated

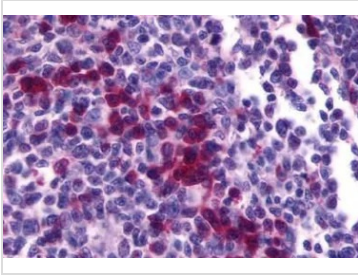
### Note

For laboratory research use only. Not for any clinical, therapeutic, or diagnostic use in humans or animals. Not for animal or human consumption.

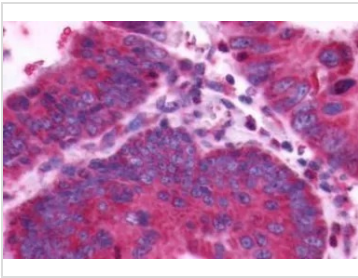
Purchasers shall not, and agree not to enable third parties to, analyze, copy, reverse engineer or otherwise attempt to determine the structure or sequence of the product.



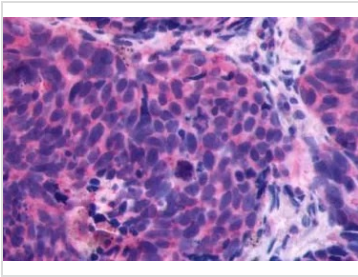
For full product information, images and publications, please visit our [website](#).

**DATA IMAGES**

**GTX70531 IHC-P Image**

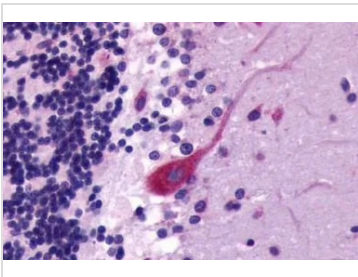
IHC-P analysis of human tonsil tissue using GTX70531 CXC4 antibody.  
Antigen retrieval : Heat-induced antigen retrieval


**GTX70531 IHC-P Image**

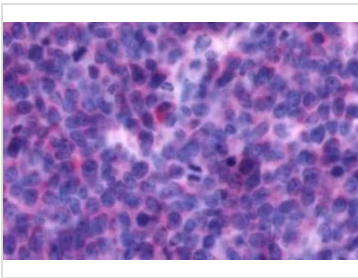
IHC-P analysis of human colon, carcinoma tissue using GTX70531 CXC4 antibody.  
Antigen retrieval : Heat-induced antigen retrieval


**GTX70531 IHC-P Image**

IHC-P analysis of lung, small cell carcinoma tissue using GTX70531 CXC4 antibody.


**GTX70531 IHC-P Image**

IHC-P analysis of brain cerebellum purkinje neuron tissue using GTX70531 CXC4 antibody.


**GTX70531 IHC-P Image**

IHC-P analysis of human lymph node, non-hodgkins lymphoma tissue using GTX70531 CXC4 antibody.  
Antigen retrieval : Heat-induced antigen retrieval



For full product information, images and publications, please visit our [website](#).